



Two Bedroom Apartment

Centrifuge Way, Farnborough, Hampshire, GU14 6GF

Guide Price: £240,000

- Two Double Bedrooms
- Modern Finish
- En Suite Shower Room
- Queensgate Development
- Communal Gardens
- Secure Entry
- Allocated Parking
- EPC : B (84)



Description

A modern two bedroom first floor apartment in the popular Queensgate development in Farnborough, offering some well designed communal gardens and a secure access entry system.

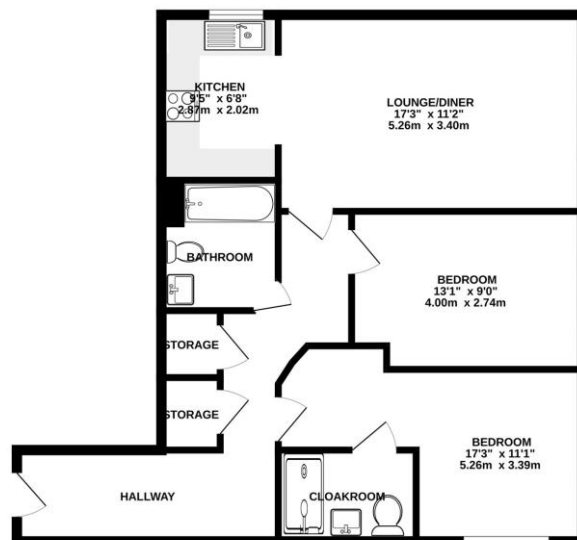
Accommodation compromises a generous entrance hallway with ample storage, two spacious bedrooms with the principal room benefitting from an en suite shower room, a three piece family bathroom, a bright, stylish kitchen with some intergrated appliances and a living/dining room offering a great versatile space.

The property also benefits from allocated parking and within close proximity to some excellent connecting roads.

Outside

The development benefits from some well presented communal gardens and allocated parking as well as visitor bays.

Floorplan



Whilst every attempt has been made to ensure the accuracy of the floorplan contained here, measurements of doors, windows, rooms and any other items are approximate and no responsibility is taken for any error, omission or misstatement. This plan is for illustrative purposes only and should be used to guide only by any prospective purchaser. The services, systems and appliances shown here are not intended to be used as a guarantee of their availability or efficiency and are for general information only.



TO ARRANGE A VIEWING PLEASE CONTACT:
Tel: **01252 361550** or Email: **info@bridges.co.uk**



Important Notice - These particulars are set out as a general outline only for the guidance of intended purchasers/tenants and do not form part of any offer or contract and must not be relied upon as statements or representations of fact. Purchasers/Tenants must satisfy themselves by inspection or otherwise as to their correctness.