

Two Bedroom Apartment

Exchange Close, Aldershot, Hampshire, GU11 2FD

Price: £270,000

- Two Double Bedrooms
- Light and Airy Apartment with a Juliette Balcony
- Allocated Parking
- Lift Access to All Floors
- Must be Seen to be Appreciated
- Exclusive Development
- Close to Train Station
- EPC: B (85)



Description

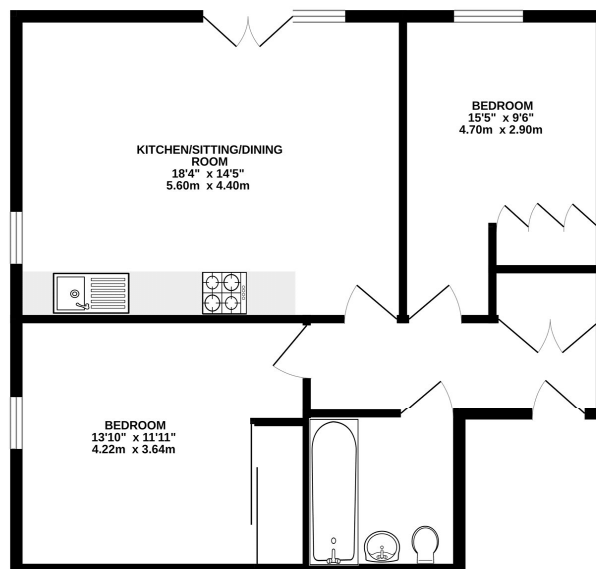
Bridges are pleased to present this fantastic apartment, positioned on an exclusive development situated in Exchange Close. Just a short walk to the main line train station with direct access into London Waterloo, this property is ideal for any type of buyer. On entering the property you are greeted with a light and airy hallway with all the accommodation leading off it. This consists of the open plan living/dining room and kitchen with a Juliette balcony - as well as a principal bedroom with an en suite. There is also a further double bedroom and a family bathroom. The property further benefits from lift access and is presented in good order throughout. Bridges Estate Agents are delighted to offer this apartment to the market and highly recommend viewing.

Outside

The property offers one allocated parking space and is positioned close to Aldershot Train Station, providing direct access to London Waterloo.

Floorplan

FIRST FLOOR



Whilst every attempt has been made to ensure the accuracy of the floorplan contained herein, measurements of floor, wall, ceiling, rooms and any other items are approximate and no responsibility is taken for any error, omission or mis-statement. This plan is for illustrative purposes only and should be used as such by any prospective purchaser. The services, fixtures and appliances shown have not been tested and no guarantee as to their operability or efficiency can be given. Made with Metaphor 10/02/23



TO ARRANGE A VIEWING PLEASE CONTACT:
Tel: **01252 361550** or Email: **info@bridges.co.uk**



Important Notice - These particulars are set out as a general outline only for the guidance of intended purchasers/tenants and do not form part of any offer or contract and must not be relied upon as statements or representations of fact. Purchasers/Tenants must satisfy themselves by inspection or otherwise as to their correctness.