



One Bedroom Apartment

Chudleigh Court, Farnborough, Hampshire, GU14 7UA

Price: £195,000

- One Double Bedroom
- Town Centre Location
- Ground Floor Apartment
- Gas Central Heating
- Communal Garden Space
- Long Lease (144 Years Remaining)
- Low Annual Maintenance Charges
- EPC: C (75)



Description

Ideally located for Farnborough town centre and Farnborough main railway station is this one double bedroom ground floor apartment.

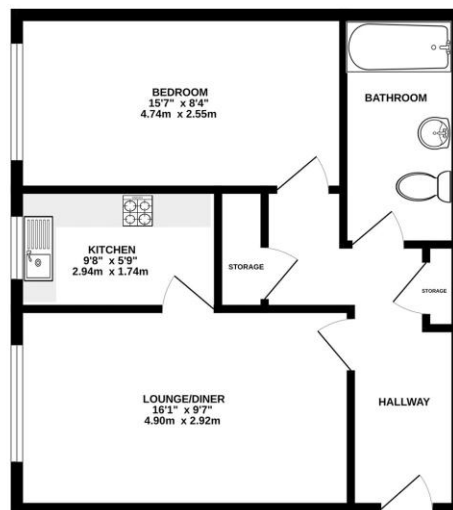
A sleek fitted kitchen, modern bathroom and a spacious main reception room that is used as a lounge/diner and study with ample storage throughout.

Outside

Chudleigh court offers some well maintained communal garden spaces along with residents parking.

Floorplan

GROUND FLOOR



Whilst every attempt has been made to ensure the accuracy of the floorplan contained herein, measurements of doors, windows, rooms and any other items are approximate and no responsibility is taken for any errors, omissions or misstatements. This plan is for illustrative purposes only and should be used as such for only prospective purchase. The accuracy, reliability and appropriateness of the plan has not been tested and no guarantee as to their accuracy or efficiency can be given. Made with Hoxpax 12/2017



TO ARRANGE A VIEWING PLEASE CONTACT:
Tel: **01252 361550** or Email: **info@bridges.co.uk**



Important Notice - These particulars are set out as a general outline only for the guidance of intended purchasers/tenants and do not form part of any offer or contract and must not be relied upon as statements or representations of fact. Purchasers/Tenants must satisfy themselves by inspection or otherwise as to their correctness.