



Four Bedroom Detached House

Portsmouth Road, Godalming, Surrey, GU7 2JU

Guide Price: £550,000

- Four Bedrooms
- Good Condition Throughout
- Enjoys Stunning Views
- Close to Town Centre
- Elevated Position
- Garage
- Two Bathrooms
- EPC: E (53)



Description

This beautiful and flexible four bedroom detached family home is offered to the market in fantastic condition throughout. Occupying a mature and elevated plot, with easy access of Godalming mainline railway station and town centre. The property enjoys beautiful views and has the benefit of a garage, driveway parking, and a spacious front and rear garden over multiple levels. Downstairs there is the kitchen, lounge/diner and a refitted shower room, plus a bedroom. Upstairs there are three bedrooms and a bathroom. This property simply must be seen to be fully appreciated, call us to book your viewing as soon as possible!

Outside

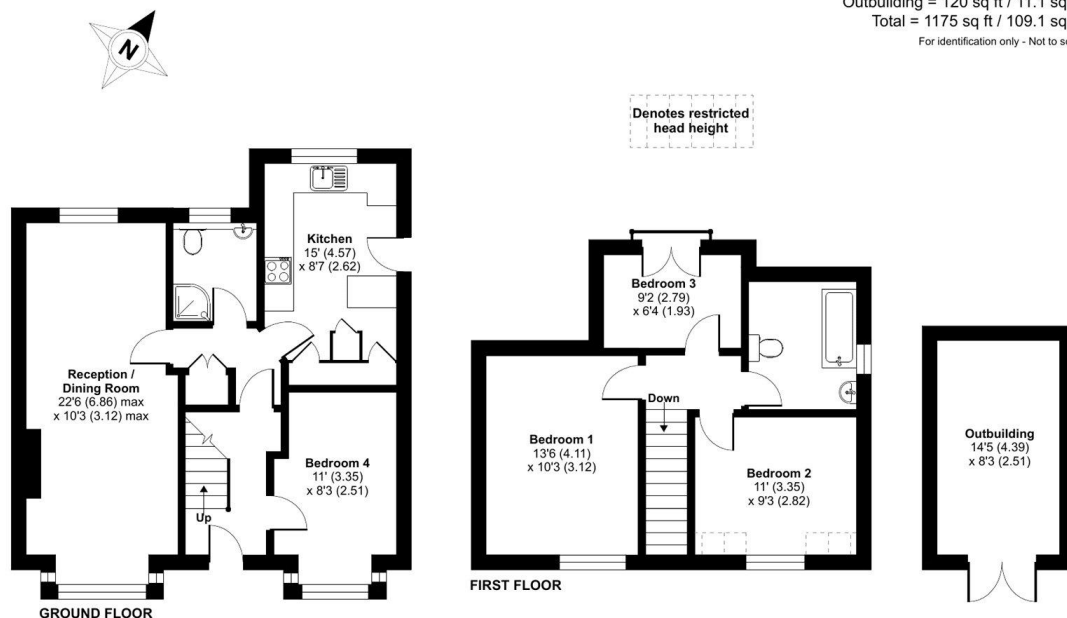
To the front there is a garage and driveway parking, with steps up to the front door. To the rear there is a patio area and multiple levels of garden.

To view the Material Information Certificate for this property please click [Here](#) or contact us to request a copy.

Floorplan

Portsmouth Road, Godalming, Surrey, GU7

Approximate Area = 1055 sq ft / 98 sq m
 Outbuilding = 120 sq ft / 11.1 sq m
 Total = 1175 sq ft / 109.1 sq m
 For identification only - Not to scale



Floor plan produced in accordance with RICS Property Measurement 2nd Edition, incorporating International Property Measurement Standards (IPMS2 Residential). © nrichcom 2025. Produced for Bridges Estate Agents. REF: 1222682

Bridges
 .CO.UK

Bridges

TO ARRANGE A VIEWING PLEASE CONTACT:
 Tel: **01252 361550** or Email: **info@bridges.co.uk**



Important Notice - These particulars are set out as a general outline only for the guidance of intended purchasers/tenants and do not form part of any offer or contract and must not be relied upon as statements or representations of fact. Purchasers/Tenants must satisfy themselves by inspection or otherwise as to their correctness.