

Three Bedroom Terraced House

Mytchett Road, Mytchett, Surrey, GU16 6ET

Offers in excess of: £400,000

- Three Double Bedroom Townhouse
- En Suite
- Parking
- Walking Distance to Local Amenities
- Walking Distance to Two Rail Stations
- Immaculate Throughout
- Private Garden
- EPC: C (80)



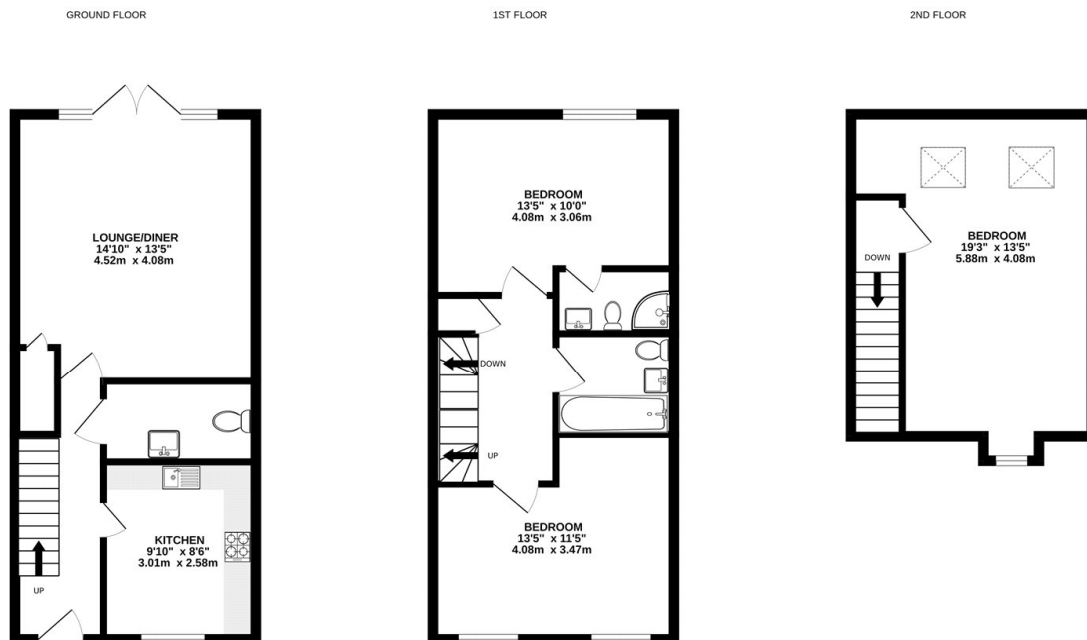
Description

****NO CHAIN**** Located within the popular village of Mytchett, and within walking distance of both Ash Vale rail station and North Camp rail station, is this immaculate three bedroom townhouse. The property downstairs boasts a kitchen with plenty of cupboard and worktop space. There is also a generous size living room/diner, with doors leading out to the garden - as well as a downstairs cloakroom. The first floor includes two double bedrooms, an en suite to the main bedroom and a three piece family bathroom suite - whilst the top floor benefits from a spacious double bedroom. Call us today to book your viewing!

Outside

Outside boasts a private enclosed garden and allocated parking.

Floorplan



Whilst every attempt has been made to ensure the accuracy of the floorplan contained here, measurements of doors, windows, rooms and any other items are approximate and no responsibility is taken for any error, omission or mis-statement. This plan is for illustrative purposes only and should be used as such by any prospective purchaser. The services, systems and appliances shown have not been tested and no guarantee as to their operability or efficiency can be given.
Made with Metropix 12/2024



TO ARRANGE A VIEWING PLEASE CONTACT:
Tel: **01252 361550** or Email: **info@bridges.co.uk**



Important Notice - These particulars are set out as a general outline only for the guidance of intended purchasers/tenants and do not form part of any offer or contract and must not be relied upon as statements or representations of fact. Purchasers/Tenants must satisfy themselves by inspection or otherwise as to their correctness.