



## Two Bedroom Maisonette

**Underwood Avenue, Ash, Surrey, GU12 6PR**

Price: £215,000

- Two Double Bedrooms
- First Floor Maisonette
- Refitted Kitchen and Modern Bathroom
- Double Glazing Throughout
- West Facing Private Rear Garden
- Lease of Approx 100 Years
- Close to Local Amenities
- EPC: D (59)





## Description

An absolutely lovely two double bedroom, first floor maisonette with a smart, refitted kitchen - set in a quiet spot in this popular part of Ash village. Presented in great condition throughout with a modern kitchen and bathroom. This great property has its own front door and a lease of approximately 101 years. What makes this property so special is the large private rear garden, which is accessed via the kitchen door. It is extremely rare to find something in this price bracket with a garden, allowing you to enjoy all the joys of outside entertaining at the same price as a flat. The location is also superb with the bus stop nearby and all the handy shops and amenities. There are some very sought after schools very close by. We very much suggest you come and take a look at this great value for money maisonette.

## Outside

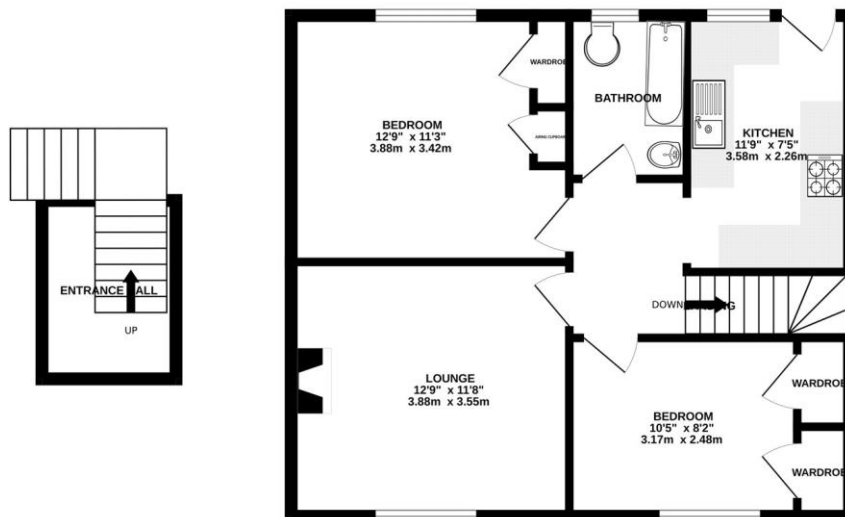
There is a pathway to the side, with a shared side access gate which leads to the outside storage cupboards and garden. To the rear is a lovely, west facing private garden, providing lots of lovely sunshine to be enjoyed. With mature plants, shrubs and a nice lawn area, there are steps from the garden which lead directly up to the property giving private access, all enclosed by wood panel fencing.

To view the Material Information Certificate for this property please click [Here](#) or contact us to request a copy.

## Floorplan

GROUND FLOOR

1ST FLOOR



Whilst every attempt has been made to ensure the accuracy of the floorplan contained here, measurements of doors, windows, rooms and any other items are approximate and no responsibility is taken for any error, omission or mis-statement. This plan is for illustrative purposes only and should be used as such by any prospective purchaser. The services, systems and appliances shown have not been tested and no guarantee as to their operability or efficiency can be given.  
Made with Metropix 12/2025



**TO ARRANGE A VIEWING PLEASE CONTACT:**  
Tel: **01252 361550** or Email: **info@bridges.co.uk**



**Important Notice** - These particulars are set out as a general outline only for the guidance of intended purchasers/tenants and do not form part of any offer or contract and must not be relied upon as statements or representations of fact. Purchasers/Tenants must satisfy themselves by inspection or otherwise as to their correctness.