

Two Bedroom Apartment

Aspen Grove, Aldershot, GU12 4EX

Price: £185,000

- Apartment
- Two Double Bedrooms
- No Onward Chain
- Refitted Kitchen
- Cul-de-Sac Location
- Close to Amenities
- Allocated Parking
- EPC: D (66)



Description

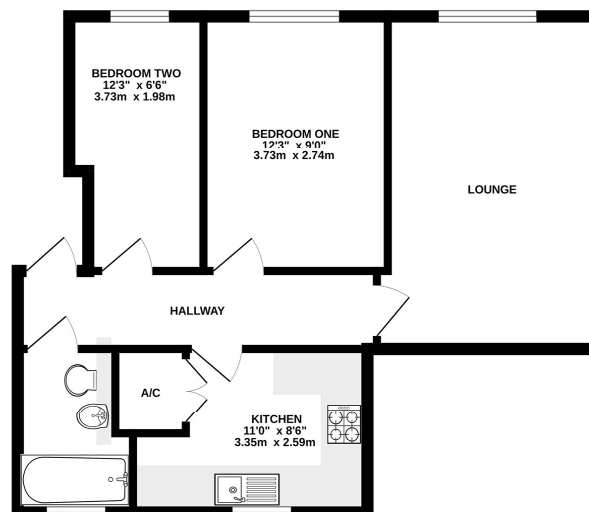
Situated within close proximity of local amenities, the A331 and Hog's Back, this well-presented apartment is offered with no onward chain complications. Accommodation comprises a living/dining room, kitchen, refitted bathroom and two double bedrooms. Externally there is visitor and allocated parking, with a park area directly opposite.

Outside

Externally there is visitor and allocated parking, with a park area directly opposite.

Floorplan

GROUND FLOOR



Whilst every attempt has been made to ensure the accuracy of the floorplan contained here, requirements of doors, windows, rooms and any other items are approximate and no responsibility is taken for any error, omission or misstatement. This plan is for illustrative purposes only and should be used as such by any prospective purchaser. The services, fixtures and appliances shown have not been tested and no guarantee as to their operability or efficiency can be given.
March 2016 Version 01/00/16



TO ARRANGE A VIEWING PLEASE CONTACT:
Tel: **01252 361550** or Email: **info@bridges.co.uk**



Important Notice - These particulars are set out as a general outline only for the guidance of intended purchasers/tenants and do not form part of any offer or contract and must not be relied upon as statements or representations of fact. Purchasers/Tenants must satisfy themselves by inspection or otherwise as to their correctness.