

## Three Bedroom End of Terrace House New Barn Close, Fleet, Hampshire, GU51 5HU

Price: £395,000 *Freehold*

- Three Bedrooms
- End of Terrace House
- Refitted Kitchen
- Driveway Parking
- Enclosed Rear Garden
- Walking Distance to Local Schools
- Viewing Advised
- EPC: C (72)





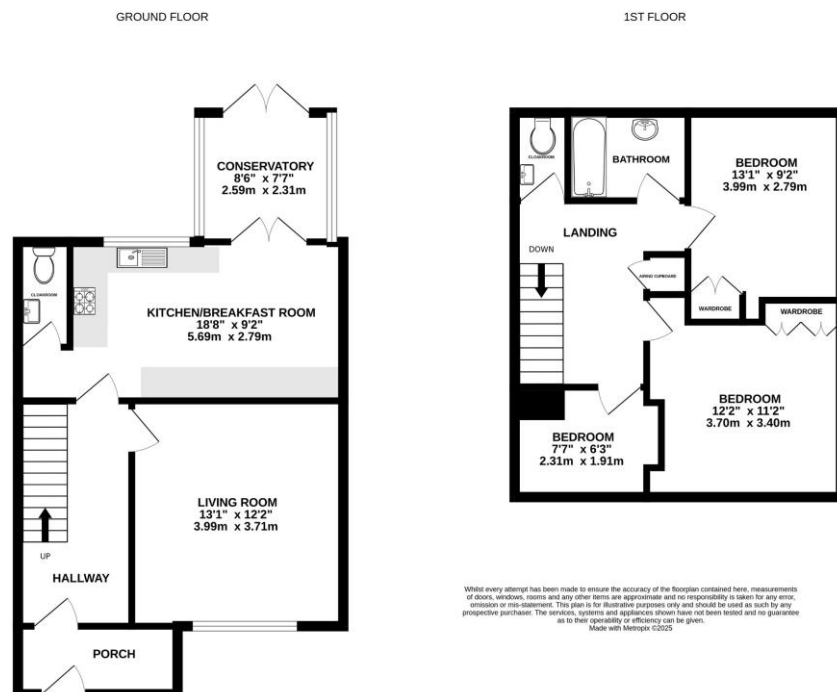
## Description

A well presented three bedroom end of terrace family home situated within easy walking distance of sought after local schools. The accommodation comprises an entrance porch, hallway, living room, a refitted open plan kitchen/breakfast room, cloakroom, and a conservatory on the ground floor. The first floor provides three bedrooms, a bathroom, and a separate cloakroom. Viewings are highly advised and strictly by appointment only.

## Outside

The property offers a block paved driveway with parking for multiple vehicles. Side access leads to the enclosed rear garden which has been laid to patio, for low maintenance, with two storage sheds.

## Floorplan



TO ARRANGE A VIEWING PLEASE CONTACT:  
Tel: 01252 361550 or Email: [info@bridges.co.uk](mailto:info@bridges.co.uk)



Important Notice - These particulars are set out as a general outline only for the guidance of intended purchasers/tenants and do not form part of any offer or contract and must not be relied upon as statements or representations of fact. Purchasers/Tenants must satisfy themselves by inspection or otherwise as to their correctness.