



Three Bedroom Semi-Detached House

Glebe Road, Farnborough, GU14 8QS

Offers in excess of: £475,000

- Three Bedrooms
- Semi Detached
- Desirable Location
- Driveway Parking and Garage
- Easterly Aspect Garden
- No Onward Chain
- Well Presented
- EPC: D (61)



Description

Bridges Estate Agents offer to the market this well presented family home situated in the desirable West Heath area in Farnborough.

The ground floor compromises of a spacious lounge area with bay window design continuing through to the dining room, a bright and modern kitchen and a downstairs cloakroom.

To the first floor the property offers a sleek three piece family bathroom with a dual aspect design, two generous double bedrooms with the main bedroom offering a full length wardrobe and a further single bedroom.

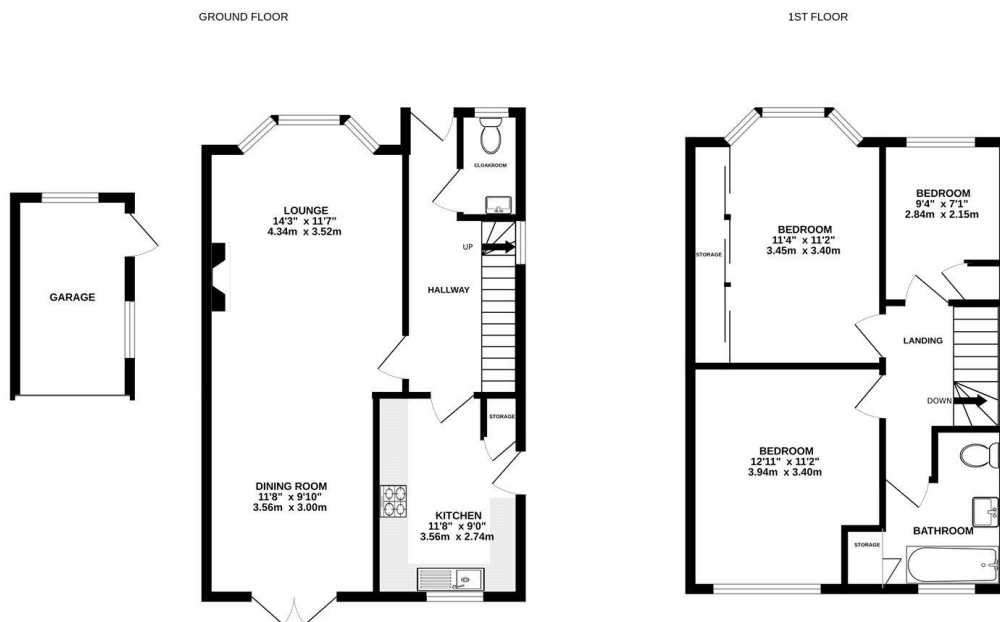
Cove Brook offers leisurely strolls within walking distance from the home, as are parks, a bus stop and local shops providing essentials, including a pharmacy.

A short distance to the town centre and Farnborough mainline station are also within easy reach, with the station serving London Waterloo in just 40 minutes. Farnborough connects to the M3 and major road links.

Outside

To the front of the property is ample driveway parking and a well presented lawn enclosed by a character stone wall. Gated access leads through the easterly aspect rear garden benefiting from a good sized detached garage, generous patio, decked seating area and a low maintenance lawn with a flower bed boarder.

Floorplan



Whilst every attempt has been made to ensure the accuracy of the floorplan contained here, measurements of doors, windows, rooms and any other items are approximate and no responsibility is taken for any error, omission or mis-statement. This plan is for illustrative purposes only and should be used as such by any prospective purchaser. The services, systems and appliances shown have not been tested and no guarantee as to their operability or efficiency can be given.
Made with Metropix ©2025



TO ARRANGE A VIEWING PLEASE CONTACT:
Tel: **01252 361550** or Email: **info@bridges.co.uk**



Important Notice - These particulars are set out as a general outline only for the guidance of intended purchasers/tenants and do not form part of any offer or contract and must not be relied upon as statements or representations of fact. Purchasers/Tenants must satisfy themselves by inspection or otherwise as to their correctness.