



One Double Bedroom Maisonette

Regent Close, Fleet, Hampshire, GU51 3NS

Guide Price: £190,000

- One Double Bedroom
- Maisonette
- Share of Freehold
- Buyers Fees Apply
- Driveway Parking and Garage
- Private Garden
- Estimated Rental Price: £925pcm
- EPC : D (61)



Description

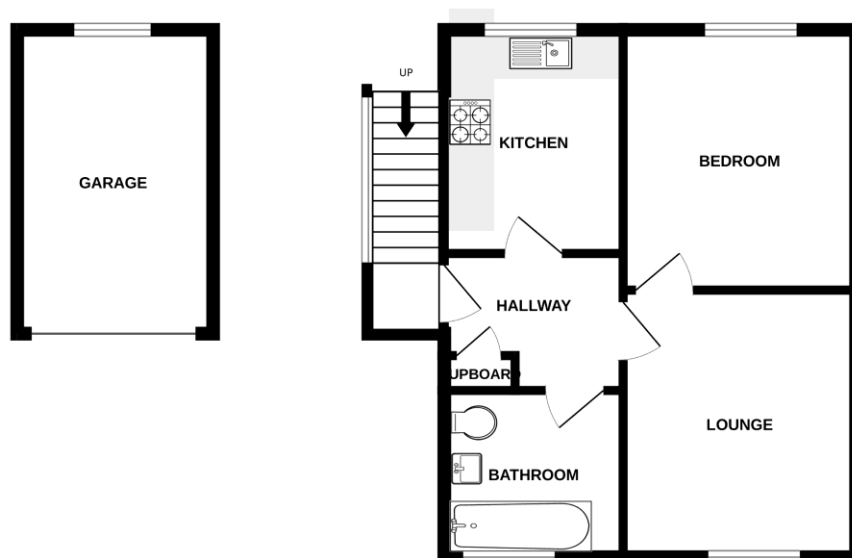
Situated at the end of a quiet, well established cul-de-sac within the Basingstoke Canal nature conservation area, is this well presented one double bedroom maisonette. Offered to the market with no onward chain complications. Only a short walk from the Fleet town centre, local shops, schools and amenities, as well as backing onto the towpath for the popular Basingstoke canal. Internally the property comprises of a lounge/diner, separate kitchen, double bedroom and a bathroom. The maisonette also offers a driveway for multiple cars, single garage and a private garden. Other added benefits include a share of the freehold with the ground floor property and has a long underlying lease of 966 years.

Outside

To the front of the property there is driveway parking, in front of the garage. There is a path leading to a separate, private and spacious rear garden. The rear garden has covered storage areas, as well as an area of patio and grass.

Floorplan

FIRST FLOOR



Whilst every attempt has been made to ensure the accuracy of the floorplan contained here, measurements of doors, windows, rooms and any other items are approximate and no responsibility is taken for any error, omission or mis-statement. This plan is for illustrative purposes only and should be used as such by any prospective purchaser. The services, systems and appliances shown have not been tested and no guarantee as to their operability or efficiency can be given.
Made with Metropack G3025



TO ARRANGE A VIEWING PLEASE CONTACT:
Tel: **01252 361550** or Email: **info@bridges.co.uk**



Important Notice - These particulars are set out as a general outline only for the guidance of intended purchasers/tenants and do not form part of any offer or contract and must not be relied upon as statements or representations of fact. Purchasers/Tenants must satisfy themselves by inspection or otherwise as to their correctness.