



Three Bedroom Semi-Detached House

Blunden Road, Farnborough, Hampshire, GU14 8QJ

Guide Price: £450,000

- Three Bedrooms
- Open Plan Kitchen/Dining Room
- Downstairs Cloakroom
- Refitted Bathroom
- Driveway Parking
- No Onward Chain
- Close to Farnborough Train Station
- EPC : D (67)



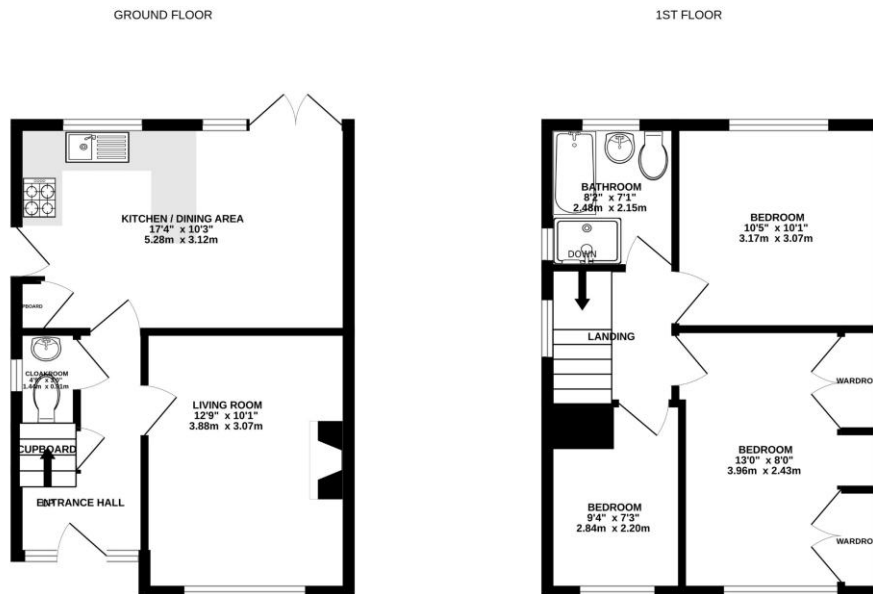
Description

Offered to the market, with no onward chain complications, is this three bedroom semi detached home with off street parking. The property is ideally located for access to Farnborough town centre and the main line train station. The accommodation comprises a front aspect living room and an open plan kitchen/dining room to the rear which provides access to the enclosed rear garden. The kitchen benefits from an integrated oven and hob. To the first floor, there are three bedrooms, with bedroom one benefitting from built in wardrobes. There is also a refitted bathroom with a separate shower cubical.

Outside

To the front of the property there is a gravel driveway offering off street parking for several vehicles. The enclosed rear garden is mainly laid to lawn with a paved patio area. The garden can also be accessed via the pedestrian side access gate.

Floorplan



Whilst every attempt has been made to ensure the accuracy of the floorplan contained here, measurements of doors, windows, rooms and any other items are approximate and no responsibility is taken for any error, omission or mis-statement. This plan is for illustrative purposes only and should be used as such by any prospective purchaser. The services, systems and appliances shown have not been tested and no guarantee as to their operability or efficiency can be given.
Made with Metropack C0204



TO ARRANGE A VIEWING PLEASE CONTACT:
Tel: **01252 361550** or Email: info@bridges.co.uk



Important Notice - These particulars are set out as a general outline only for the guidance of intended purchasers/tenants and do not form part of any offer or contract and must not be relied upon as statements or representations of fact. Purchasers/Tenants must satisfy themselves by inspection or otherwise as to their correctness.