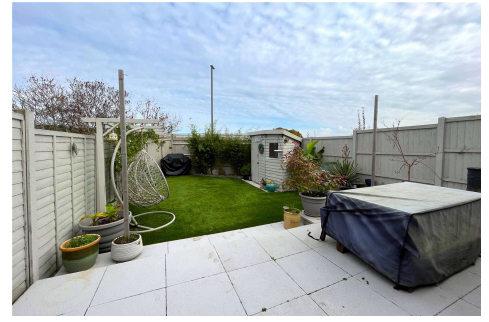
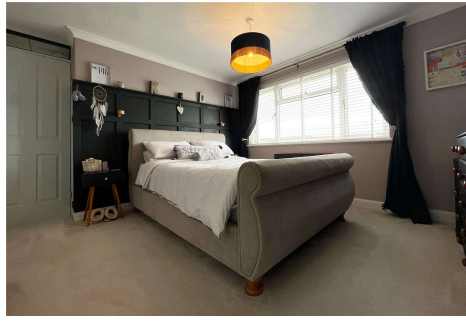


Three Bedroom Terraced House

Foreman Park, Ash, Surrey, GU12 6JW

Offers in excess of: £450,000

- Three Bedrooms
- Renovated Throughout and Refitted Bathroom
- Walking Distance to Rail Station
- Stunning Kitchen/Diner
- Utility Room with Dog Bath
- Conservatory
- Driveway Parking
- EPC: D (66)



Description

Offered to the market, and located only minutes walk from the local rail station, is this stunning three bedroom home. The property has undergone complete renovation and the result is a beautiful three bedroom home. The property downstairs boasts a wonderful kitchen/dining area, with an island and plenty of work top and cupboard space. You will also find a utility room/cloakroom with sink, plenty of cupboard space and bespoke dog bath. In addition, the downstairs benefits from a beautiful lounge area which flows perfectly into the conservatory/dining room. Upstairs boasts three bedrooms and a refitted bathroom. Give us a call today to book your viewing!

Outside

Outside boasts a well presented private rear garden, with patio area and storage shed. There is also driveway parking and an additional allocated parking space.

Floorplan



TO ARRANGE A VIEWING PLEASE CONTACT:
Tel: **01252 361550** or Email: **info@bridges.co.uk**



Important Notice - These particulars are set out as a general outline only for the guidance of intended purchasers/tenants and do not form part of any offer or contract and must not be relied upon as statements or representations of fact. Purchasers/Tenants must satisfy themselves by inspection or otherwise as to their correctness.