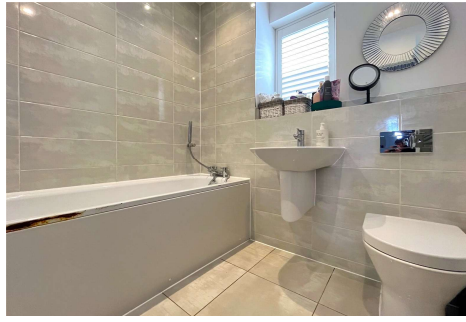


Three Bedroom Semi-Detached House

The Croft, Ash Green, Surrey, GU12 6FA

Offers in excess of: £500,000

- Three Bedrooms
- Garage
- Parking
- En Suite
- Large Lounge
- No Onward Chain
- Well Presented Throughout
- EPC: B (84)



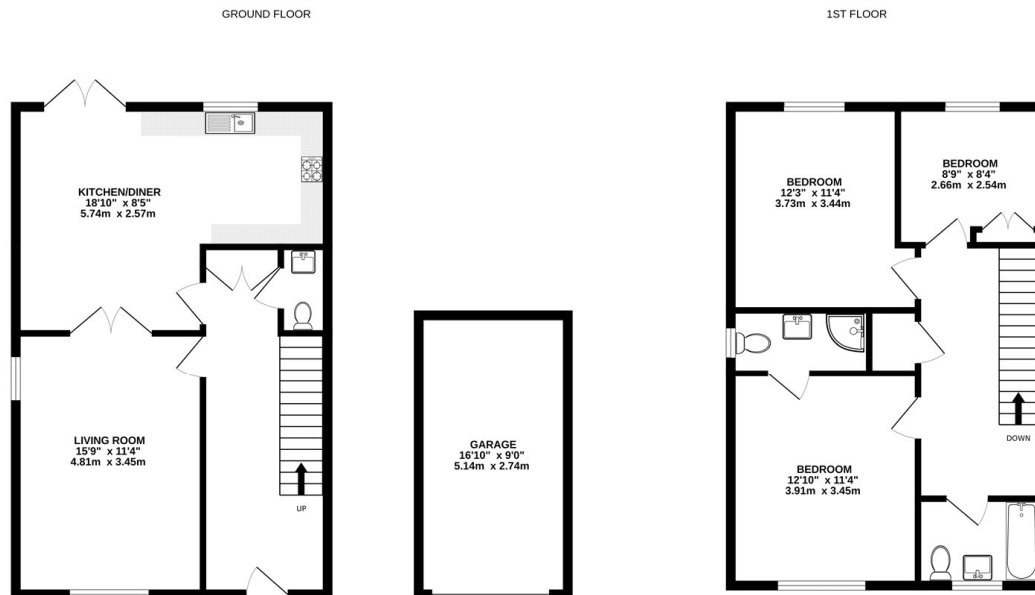
Description

****NO CHAIN**** Located within the exclusive Croft development in the popular village of Ash Green, is this well presented and spacious three bedroom, semi-detached home. The house downstairs boasts a large kitchen/dining area, an ideal space for entertaining and socialising, whilst also boasting plenty of worktop and cupboard space. There is also the benefit of doors which lead into the garden. Further accommodation includes a spacious living room and cloakroom. Upstairs boasts three double bedrooms, an en suite to the main bedroom and a family bathroom. The location benefits from being only minutes walk from the station, as well as providing beautiful walks through the local countryside.

Outside

Outside boasts a private and enclosed garden, a garage and parking.

Floorplan



Whilst every attempt has been made to ensure the accuracy of the floorplan contained here, measurements of doors, windows, rooms and any other items are approximate and no responsibility is taken for any error, omission or mis-statement. This plan is for illustrative purposes only and should be used as such by any prospective purchaser. The services, systems and appliances shown have not been tested and no guarantee as to their operability or efficiency can be given.
Made with Metropix ©2024



TO ARRANGE A VIEWING PLEASE CONTACT:
Tel: **01252 361550** or Email: **info@bridges.co.uk**



Important Notice - These particulars are set out as a general outline only for the guidance of intended purchasers/tenants and do not form part of any offer or contract and must not be relied upon as statements or representations of fact. Purchasers/Tenants must satisfy themselves by inspection or otherwise as to their correctness.