



## Two Double Bedroom Apartment Twyford Close, Fleet, Hampshire, GU51 1JX

Price: £245,000

- Two Double Bedrooms
- Apartment
- Extended Lease on Completion
- Available at 60% Share
- Balcony
- Modern Kitchen and Bathroom
- Two Allocated Parking Spaces
- EPC: C (79)



## Description

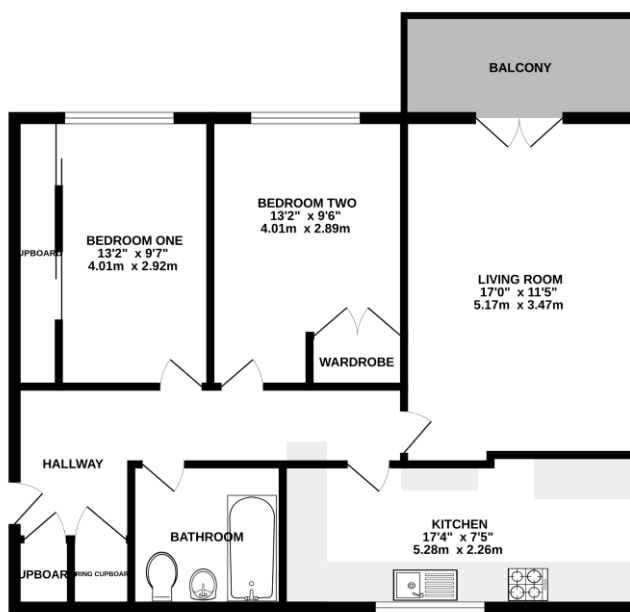
Offered to the market in good order throughout is this two bedroom first floor apartment. The property benefits from two spacious bedrooms, both with built-in wardrobes, a modern kitchen and bathroom - as well as a spacious lounge/diner, with doors to the balcony. The apartment also boasts two storage cupboards, ensuring there is ample storage space within the property. Set in the popular Elvetham Heath development, close to local schools, shops and commuter links, this property is an ideal purchase. The property is also available at 60% share.

## Outside

The property benefits from two allocated parking spaces, a communal garden area laid to lawn - as well as a separate bike and bin shed. There is also a private balcony offering an ideal spot for a table and chairs.

## Floorplan

FIRST FLOOR



Whilst every attempt has been made to ensure the accuracy of the floorplan contained here, measurements of floors, windows, rooms and any other items are approximate and no responsibility is taken for any error, omission or mis-statement. This plan is for illustrative purposes only and should be used as such by any prospective purchaser. The services, systems and appliances shown have not been tested and no guarantee as to their operation or efficiency can be given.  
Made with Mapbox ©2025



**TO ARRANGE A VIEWING PLEASE CONTACT:**  
Tel: **01252 361550** or Email: **info@bridges.co.uk**



**Important Notice - These particulars are set out as a general outline only for the guidance of intended purchasers/tenants and do not form part of any offer or contract and must not be relied upon as statements or representations of fact. Purchasers/Tenants must satisfy themselves by inspection or otherwise as to their correctness.**