



Three Bedroom Terraced House

Lynwood Drive, Mytchett, Surrey, GU16 6BT

Price: £365,000

- Three Bedroom House
- Terraced House
- Kitchen/Diner
- Garage in Block
- No Onward Chain
- Walking Distance to Amenities
- Conservatory
- EPC: C (69)



Description

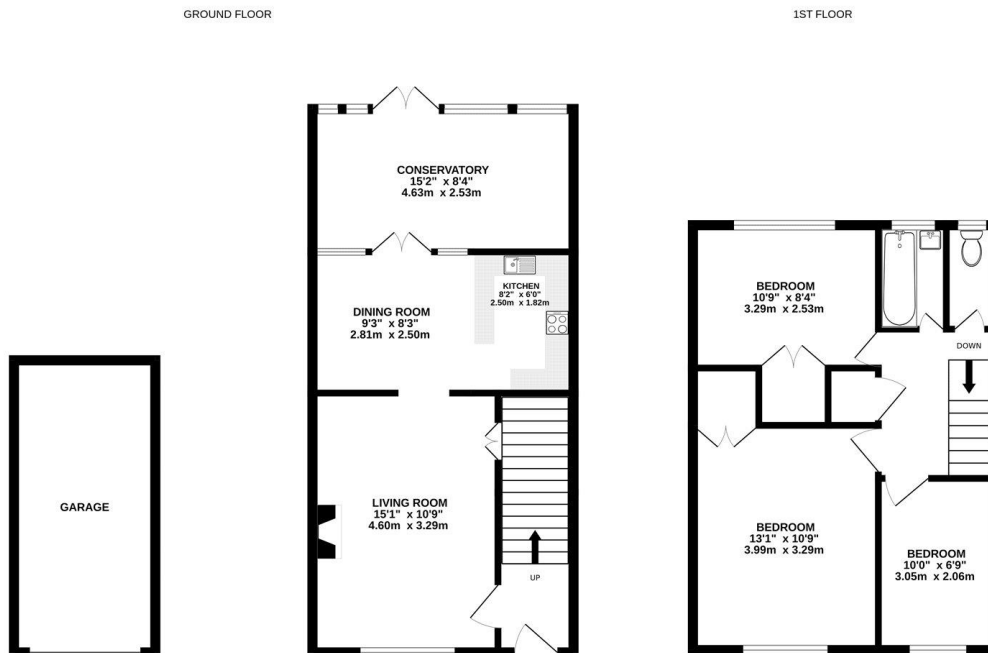
****NO CHAIN**** Located within the popular village of Mytchett, and within walking distance of the rail station and amenities, is this spacious three bedroom freehold house. The property is located on a no through road and boasts a bright and airy living room. You will also find a kitchen/diner with plenty of cupboard and work top space, as well as a conservatory with pleasant views into the garden. Upstairs benefits from three bedrooms, all boasting fitted wardrobes, and a family bathroom. Call us today to book your viewing.

Outside

Outside boasts a garage in a block with a replaced roof and a front garden with potential for a drive, subject to planning. There is also a well presented private rear garden with a storage shed.

To view the Material Information Certificate for this property please click [Here](#) or contact us to request a copy.

Floorplan



Whilst every attempt has been made to ensure the accuracy of the floorplan contained here, measurements of doors, windows, rooms and any other items are approximate and no responsibility is taken for any error, omission or mis-statement. This plan is for illustrative purposes only and should be used as such by any prospective purchaser. The services, systems and appliances shown have not been tested and no guarantee as to their operability or efficiency can be given.
Made with Metropix ©2025



TO ARRANGE A VIEWING PLEASE CONTACT:
Tel: **01252 361550** or Email: **info@bridges.co.uk**



Important Notice - These particulars are set out as a general outline only for the guidance of intended purchasers/tenants and do not form part of any offer or contract and must not be relied upon as statements or representations of fact. Purchasers/Tenants must satisfy themselves by inspection or otherwise as to their correctness.