

Three Bedroom Terraced House

Halewood, Bracknell, Bracknell Forest, RG12 8XB

Guide Price: £350,000

- Three Bedrooms
- Upstairs Study
- Open Plan Living/Dining Room
- 12ft Fitted Kitchen and Ample Storage
- Garage in a Nearby Block and Resident Parking
- Low Maintenance Garden
- Scope for Improvement
- EPC: D (66)



Description

Located within the popular established development Great Hollands, is this three bedroom terrace family home. Overlooking a small communal green and offering easy access to local shops, schools and access to Bracknell Town centre as well as links to the A339 and mainline station. The property offers a 12ft fitted kitchen, open plan living/dining room, ample storage, scope for improvement, low maintenance garden, downstairs cloakroom/utility area and an upstairs study. This is an ideal family home.

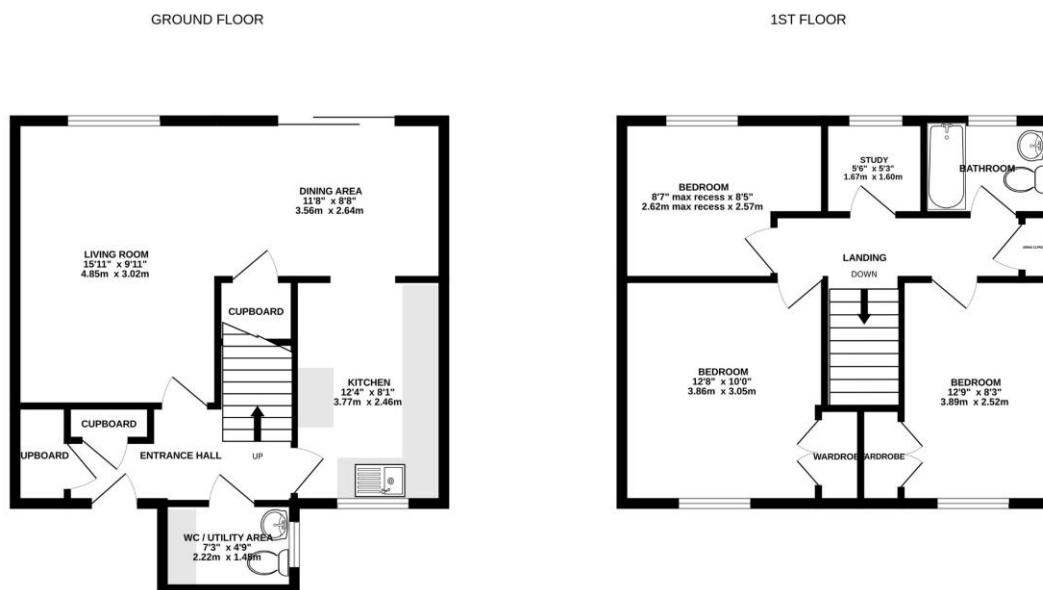
Outside

The outside features an enclosed, low maintenance garden consisting of a slab patio, a raised step leading to a decked area with lighting and slab surround, shingle beds, all enclosed by wood panel fencing.

To the front of the property there is a slab path leading to the front door and a small area of lawn.

There is a garage in a nearby block with residents parking.

Floorplan



TO ARRANGE A VIEWING PLEASE CONTACT:

Tel: **01344 962150** or Email:



Important Notice - These particulars are set out as a general outline only for the guidance of intended purchasers/tenants and do not form part of any offer or contract and must not be relied upon as statements or representations of fact. Purchasers/Tenants must satisfy themselves by inspection or otherwise as to their correctness.