



Two Bedroom Apartment

Cyprus Road, Deepcut, Camberley, Surrey, GU16 6TH

Price: £140,000

- Two Double Bedrooms
- Luxury Apartment
- Ground Floor
- Open Plan Kitchen/Living/Dining Room
- Modern Bathroom
- High Specification
- Allocated Parking
- EPC: C (80)



Description

50% SHARED OWNERSHIP

Built in 2022, is this luxury ground floor two double bedroom apartment located in the sought after Mindenhurst Development in Deepcut.

The property has light and spacious accommodation comprising; good size hallway with storage cupboard, an open plan arrangement with a high specification kitchen, living/dining area, two excellent double bedrooms and a modern bathroom. An internal inspection is highly recommended to appreciate this apartment.

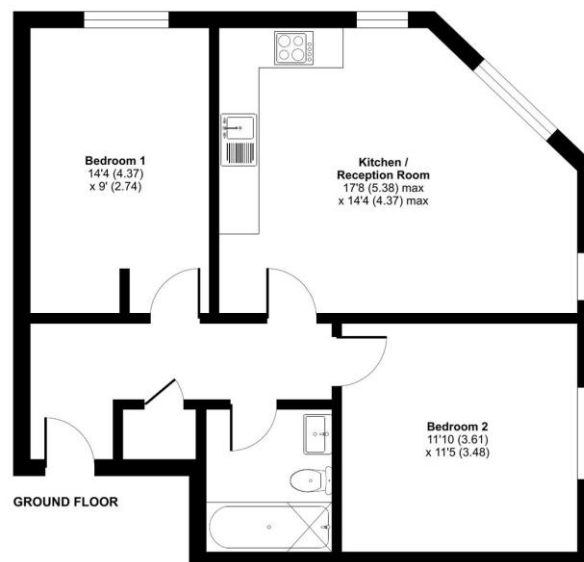
This property is available for 50% shared ownership, with 123 years remaining on the lease. Ground rent amounts to £276 Per Annum and service charge amounts to £663.00 Per Annum.

Outside

There is allocated parking with a good amount of visitor parking.

Floorplan

Approximate Area = 656 sq ft / 60.9 sq m
For identification only - Not to scale



TO ARRANGE A VIEWING PLEASE CONTACT:
Tel: **01252 361550** or Email: info@bridges.co.uk



Important Notice - These particulars are set out as a general outline only for the guidance of intended purchasers/tenants and do not form part of any offer or contract and must not be relied upon as statements or representations of fact. Purchasers/Tenants must satisfy themselves by inspection or otherwise as to their correctness.