



## Three Bedroom Detached House

**Rodmel Court, Farnborough, Hampshire, GU14 6TY**

Guide Price: £500,000

- Three Bedrooms
- Detached
- Corner Plot
- South Farnborough
- Garage
- Well Presented Rear Garden
- Driveway Parking
- EPC: TBC



## Description

Rodmel Court is a popular development in the desirable South Farnborough close to a range of local amenities, including shops, schools, and transport links

The property has been finished to an excellent standard by the current owners and offers a modern, sleek design throughout and would be ideal for someone looking for a ready to go home.

Upon entering the property there is an entrance hallway with downstairs cloakroom, access through to the main lounge and then the kitchen/diner with access out to a low maintenance garden space.

To the first floor the property offers two double bedrooms, a family bathroom and a study before continuing to the top floor.

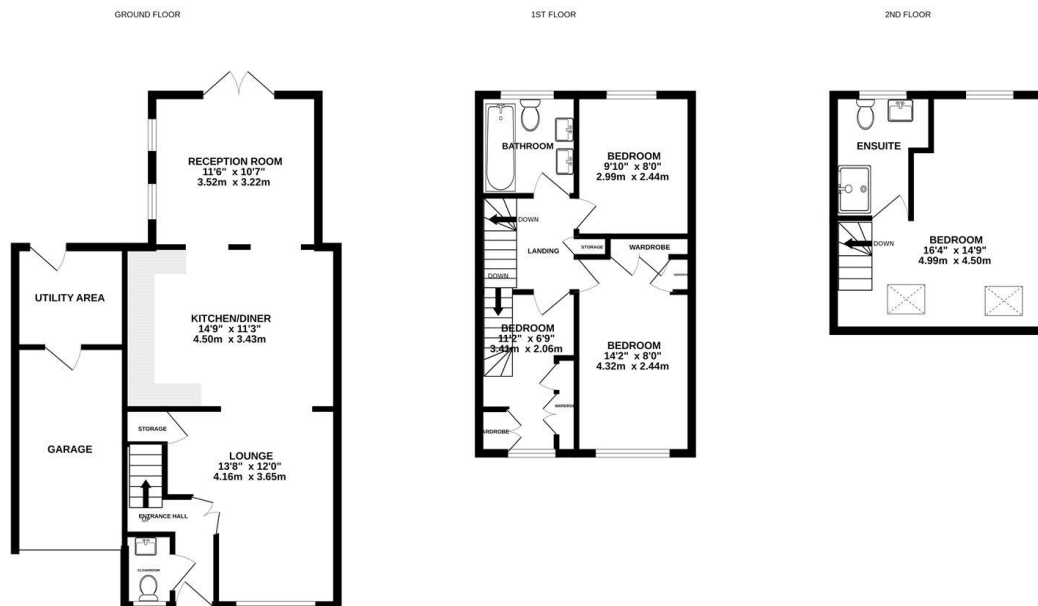
There is an additional double bedroom with an en suite and the bedroom offers some beautiful views of the surrounding areas.

The property also boasts driveway parking, a garage, separate utility section, viewings are highly recommended to appreciate all this property has to offer.

## Outside

The property offers driveway parking in front of the garage, a low maintenance front garden styled with potted plants and a well presented rear garden with a seating area at the end of the lawn.

## Floorplan



Whilst every attempt has been made to ensure the accuracy of the floorplan contained here, measurements of doors, windows, rooms and any other items are approximate and no responsibility is taken for any error, omission or mis-statement. This plan is for illustrative purposes only and should be used as such by any prospective purchaser. The services, systems and appliances shown have not been tested and no guarantee as to their operability or efficiency can be given.  
Made with Metropix 12/2025



**TO ARRANGE A VIEWING PLEASE CONTACT:**  
Tel: **01252 361550** or Email: **info@bridges.co.uk**



**Important Notice** - These particulars are set out as a general outline only for the guidance of intended purchasers/tenants and do not form part of any offer or contract and must not be relied upon as statements or representations of fact. Purchasers/Tenants must satisfy themselves by inspection or otherwise as to their correctness.