



Three Bedroom Semi-Detached House Newport Road, Aldershot, Hampshire, GU12 4PZ

Price: £400,000

- Three Bedroom Semi-Detached
- Acquire a Part of Local History
- Driveway and Garage
- Three Double Bedrooms
- Must be Seen to be Appreciated
- Well Regarded Residential Location
- Two Reception Rooms
- EPC: E (42)



Description

A unique opportunity to acquire a part of local history - this property was originally an oast house - and boasts being the only round house in Aldershot. In keeping with its Victorian heritage, the property features the bathroom on the ground floor, nestled off the kitchen and utility room/storage cupboard. On the first floor, the property boasts three double bedrooms. The lounge is a real feature to note, as it is as round as the principal bedroom. This family home is highly recommended to view, as it also benefits from an established rear garden, driveway parking and a garage. Located just 0.7 miles from the train station, which offers direct links to London Waterloo, this exceptional family home is also within walking distance of popular schools and Manor Park Conservation Area.

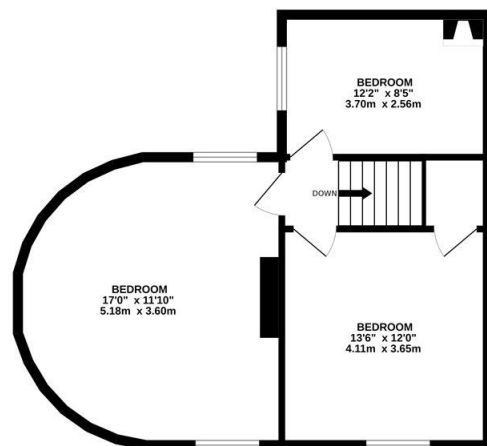
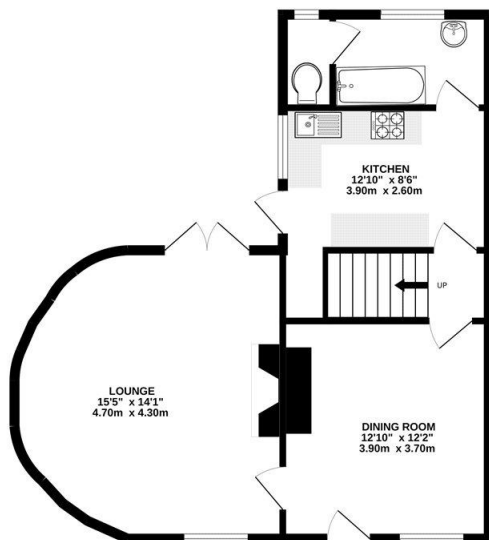
Outside

Positioned on a generous plot, you can find a driveway to the side with a garage. The property offers an attractive rear garden incorporating an area of lawn, patio perfect for entertaining - and is enclosed by mature hedging and fencing. The garden provides a good degree of privacy and seclusion, with established trees, plants and shrubs.

Floorplan

GROUND FLOOR

1ST FLOOR



Whilst every attempt has been made to ensure the accuracy of the floorplan contained here, measurements of doors, windows, rooms and any other items are approximate and no responsibility is taken for any error, omission or mis-statement. This plan is for illustrative purposes only and should be used as such by any prospective purchaser. The services, systems and appliances shown have not been tested and no guarantee as to their operability or efficiency can be given.
Made with Metropix ©2025



TO ARRANGE A VIEWING PLEASE CONTACT:
Tel: **01252 361550** or Email: **info@bridges.co.uk**



Important Notice - These particulars are set out as a general outline only for the guidance of intended purchasers/tenants and do not form part of any offer or contract and must not be relied upon as statements or representations of fact. Purchasers/Tenants must satisfy themselves by inspection or otherwise as to their correctness.