



## Two Bedroom Maisonette

**Halifax Close, Guildford, Surrey, GU3 3FN**

**Price: £170,000**

- Split Level Two Bedroom Maisonette
- 50% Shared Ownership
- Garden
- Parking
- Easy access to Guildford
- Immaculate Throughout
- Open Plan Living
- EPC: B (87)



## Description

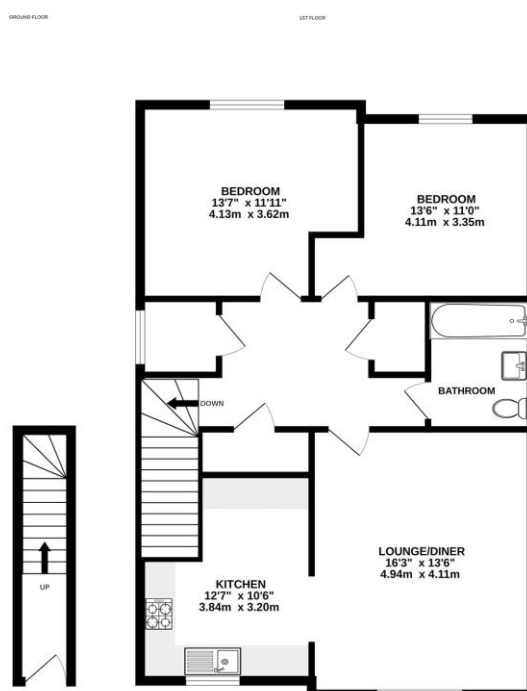
**\*\* 50% Shared Ownership\*\*** Offering easy access into Guildford, but set in a quiet rural location, is this spacious and immaculate two bedroom maisonette. The property boasts a large lounge/diner and a beautifully fitted kitchen, with plenty of work top and cupboard space. There are also two double bedrooms and a bathroom suite. Further benefits include gas central heating, double glazing and parking - alongside solar panels and a private rear garden. Viewings come highly recommended to appreciate this immaculate maisonette. 100% share is also available for purchase at £345,000.

## Outside

Outside boasts parking and a private enclosed garden.

To view the Material Information Certificate for this property please click [Here](#) or contact us to request a copy.

## Floorplan



Whilst every attempt has been made to ensure the accuracy of the floorplan contained here, measurements of plots, walls, doors and any other items are approximate and no responsibility is taken for any error, omission or mis-statement. This plan is for illustrative purposes only and should be used as a guide for any prospective purchaser. The actual layout and dimensions of the property may vary from those shown and no guarantee as to their accuracy or efficiency can be given.  
Made with Metaphor 10/20/21



**TO ARRANGE A VIEWING PLEASE CONTACT:**  
Tel: **01252 361550** or Email: **info@bridges.co.uk**



**Important Notice - These particulars are set out as a general outline only for the guidance of intended purchasers/tenants and do not form part of any offer or contract and must not be relied upon as statements or representations of fact. Purchasers/Tenants must satisfy themselves by inspection or otherwise as to their correctness.**