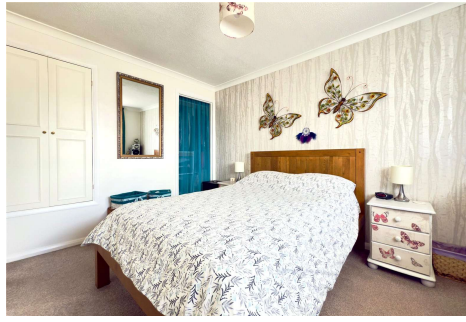


Three Bedroom End of Terrace House

Foreman Park, Ash, Surrey, GU12 6JN

Offers in excess of: £350,000

- Three Bedroom End of Terrace
- Garage in Block
- Renovated Throughout
- Three Reception Rooms
- Refitted Bathroom
- Refitted Kitchen
- Landscaped Low Maintenance Rear Garden
- EPC: D (61)



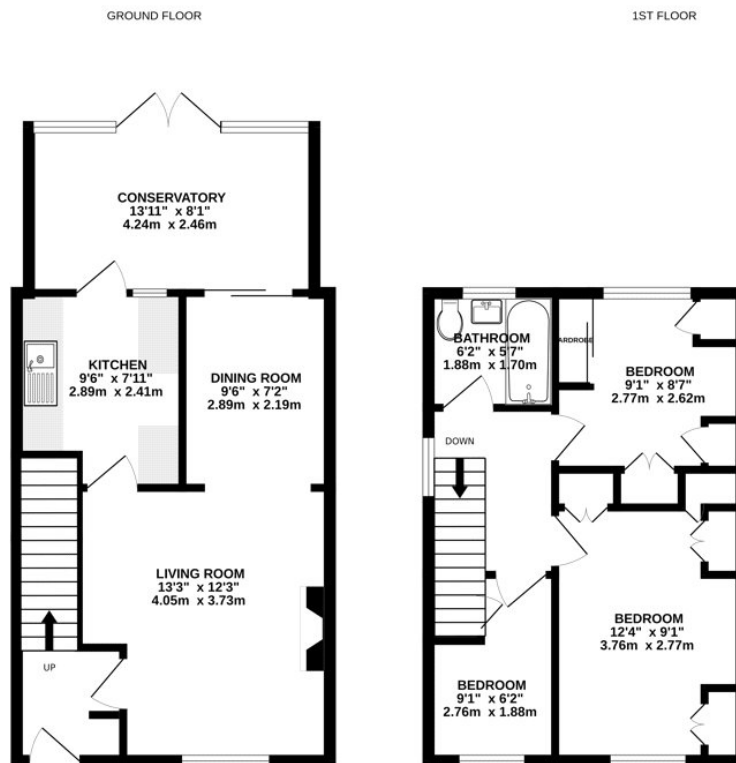
Description

****Complete chain above**** Located in a quiet and quaint location, and within minutes walk of the local rail station and presented in immaculate condition, is this wonderful three bedroom end of terrace home. The downstairs boasts a spacious living room alongside a refitted kitchen, with plenty of work top and cupboard space. You will also find a bright and airy garden room and a separate dining room. Upstairs benefits from three bedrooms and a refitted bathroom suite. The property has undergone complete renovation throughout and includes a number of improvements. To appreciate this beautiful example of a three bedroom home, please call to arrange your viewing today.

Outside

Outside boasts a recently landscaped rear garden and front garden - alongside a large storage shed and rear access. There is also a garage in a block, and one allocated parking space.

Floorplan



TO ARRANGE A VIEWING PLEASE CONTACT:
Tel: **01252 361550** or Email: info@bridges.co.uk



Important Notice - These particulars are set out as a general outline only for the guidance of intended purchasers/tenants and do not form part of any offer or contract and must not be relied upon as statements or representations of fact. Purchasers/Tenants must satisfy themselves by inspection or otherwise as to their correctness.