



Three Bedroom Detached House Guildford Road, Ash, Surrey, GU12 6BT

Offers in excess of: £550,000

- Three Bedrooms
- Detached Home
- Ample Driveway Parking
- Close to Train Station
- Extended Garage with Power and Light
- Private Enclosed Garden
- Car Port
- EPC: TBC



Description

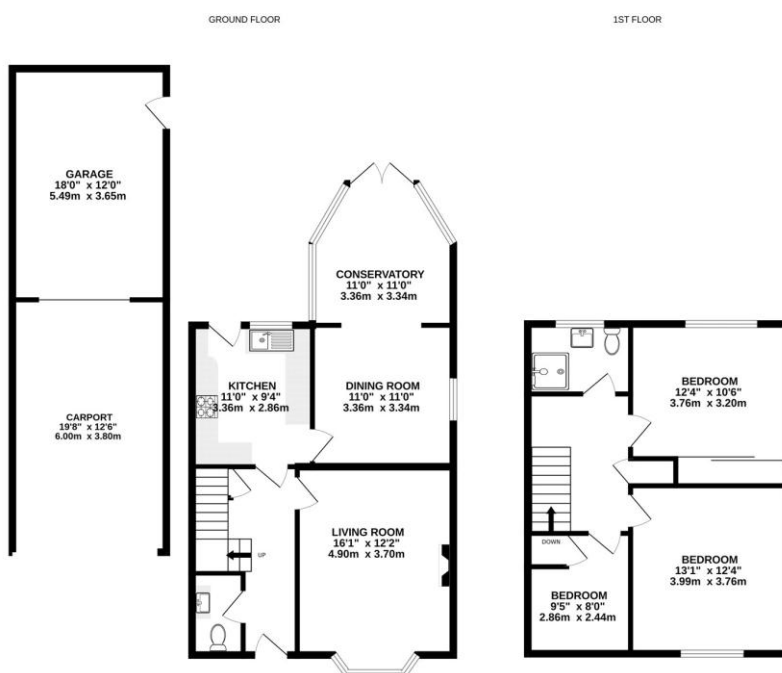
Bridges are proud to market this three bedroom detached home with garage, driveway parking and a well sized rear garden. The location is ideal as the property is only a short walk to Ash train station and the local amenities - whilst also offering easy access onto the A3 and into London. Downstairs, the property boasts a spacious front living room with a feature wood burner - with a separate dining room which flows nicely into the conservatory. You will also find a fitted kitchen with pleasant views into the garden, as well as a downstairs cloakroom. Upstairs benefits from three double bedrooms and a family bathroom. Give us a call today to book your viewing.

Outside

The property boasts a generous plot which includes a well sized private garden, a garage with power and lighting - as well as a car port and parking for multiple vehicles.

To view the Material Information Certificate for this property please click [Here](#) or contact us to request a copy.

Floorplan



TO ARRANGE A VIEWING PLEASE CONTACT:
Tel: **01252 361550** or Email: **info@bridges.co.uk**



Important Notice - These particulars are set out as a general outline only for the guidance of intended purchasers/tenants and do not form part of any offer or contract and must not be relied upon as statements or representations of fact. Purchasers/Tenants must satisfy themselves by inspection or otherwise as to their correctness.