



Two Bedroom Detached Bungalow

Mayfield, Rowledge, Farnham, Surrey, GU10 4DZ

Price: £700,000

- Two Double Bedrooms
- Fabulous Location
- Spacious Dual Aspect Living Room
- Three Piece Bathroom En Suite
- Private Gardens
- Garage and Driveway
- No Onward Chain
- EPC: C (79)



Description

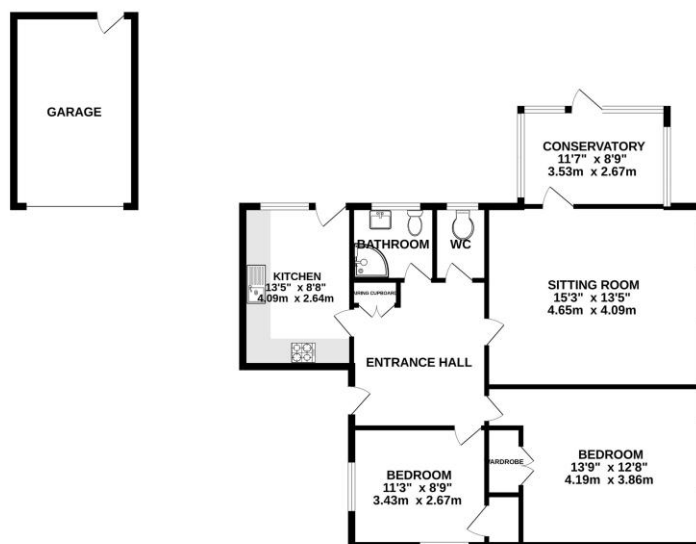
This desirable bungalow is located in a quiet cul-de-sac in the highly sought after village of Rowledge. It is within walking distance of the village shops and amenities and is arranged on one level. The front door opens into a spacious entrance hallway of which all the other rooms open, from the fitted kitchen with back doors to the garden, spacious sitting room with sliding doors to the garden and French doors to the conservatory, family bathroom, separate cloakroom and two double bedrooms.

Outside

Enclosed rear garden which benefits from being completely overlooked. The garden offers patio areas, lawn and well stocked borders with a greenhouse and two sheds. There is also a side access gate from the driveway.

Floorplan

GROUND FLOOR



Whilst every attempt has been made to ensure the accuracy of the floorplan contained here, measurements of rooms, gardens, etc. and any other details are approximate and no responsibility is taken for any errors, omissions or mis-statements. This plan is for illustrative purposes only and should be used as such by any prospective purchaser. The services, systems and appliances shown have not been tested and no guarantee as to their operability or efficiency can be given. Made with Metreplan 12/05/15



TO ARRANGE A VIEWING PLEASE CONTACT:
Tel: **01252 361550** or Email: **info@bridges.co.uk**



Important Notice - These particulars are set out as a general outline only for the guidance of intended purchasers/tenants and do not form part of any offer or contract and must not be relied upon as statements or representations of fact. Purchasers/Tenants must satisfy themselves by inspection or otherwise as to their correctness.