

Two Bedroom End of Terrace Apartment

Kingsley Square, Fleet, Hampshire, GU51 1AJ

Price: £290,000

- Two Bedrooms
- First Floor Apartment
- En Suite to Main Bedroom
- Elvetham Heath Development
- Long Lease
- Allocated Parking
- Balcony
- EPC: C (79)



Description

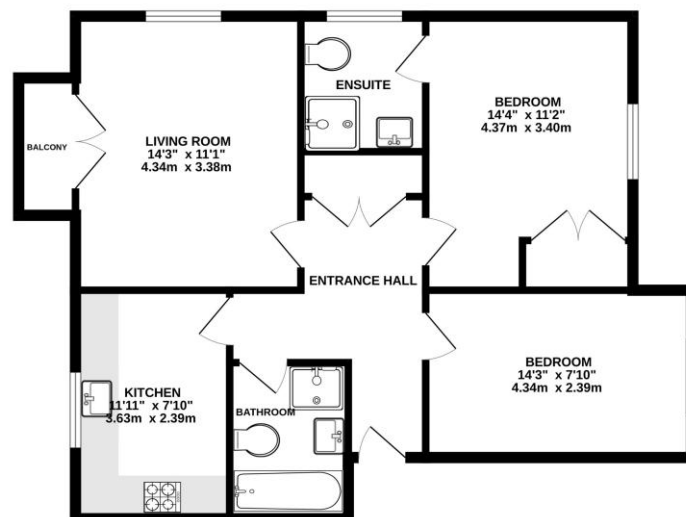
Offered to the market, with no onward chain, this immaculately presented two bedroom apartment, tucked away in the corner of Elvetham Heath. The property benefits from a spacious living/dining area with patio doors leading out to a balcony and a kitchen area that also has room to dine. Both bedrooms are spacious with room for double beds, with the principal bedroom offering both an en suite and built-in wardrobes, as well as boasting a further family bathroom.

Outside

The property is situated within the sought after Elvetham Heath development and benefits from a long lease, two allocated parking spaces and a balcony accessed via double doors from the living room.

Floorplan

GROUND FLOOR



Whilst every attempt has been made to ensure the accuracy of the floorplan contained here, measurements of doors, windows, rooms and any other details are approximate and no responsibility is taken for any errors, omission or mis-statement. This plan is for illustrative purposes only and should be used as such by any prospective purchaser. The services, systems and appliances shown have not been tested and no guarantee as to their operability or efficiency can be given.
Made with Metreplan CCDC



TO ARRANGE A VIEWING PLEASE CONTACT:
Tel: **01252 361550** or Email: **info@bridges.co.uk**



Important Notice - These particulars are set out as a general outline only for the guidance of intended purchasers/tenants and do not form part of any offer or contract and must not be relied upon as statements or representations of fact. Purchasers/Tenants must satisfy themselves by inspection or otherwise as to their correctness.