



Two Bedroom Apartment

Whitsbury House, Twyford Close, Fleet, Hampshire, GU51 1JY

Offers in the Region of: £250,000

- Two Bedrooms
- Top Floor Apartment
- Lounge with Juliet Balcony
- Fitted Kitchen
- Two Allocated Parking Spaces
- Ample Storage Cupboards
- Loft Access
- EPC: C (76)



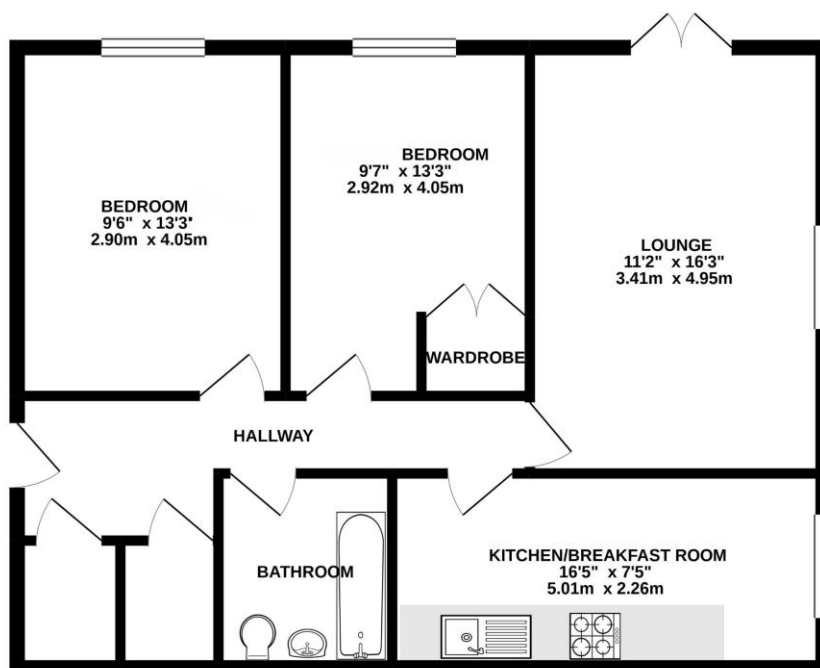
Description

Offered to the market, this wonderful two bedroom apartment, situated on the popular Elvetham Heath development, close to the nature reserve. The property offers a family bathroom, spacious kitchen, and a great sized living area with a Juliet balcony. There is ample storage with sizeable cupboards and further loft access.

Outside

This property is tucked in the corner of the ever popular Elvetham Heath development, overlooking the local park, and a short walk away from a nature reserve. The Heath boasts Morrisons supermarket, a primary school, and lovely pub. The property further offers allocated parking.

Floorplan



TO ARRANGE A VIEWING PLEASE CONTACT:
Tel: **01252 361550** or Email: **info@bridges.co.uk**



Important Notice - These particulars are set out as a general outline only for the guidance of intended purchasers/tenants and do not form part of any offer or contract and must not be relied upon as statements or representations of fact. Purchasers/Tenants must satisfy themselves by inspection or otherwise as to their correctness.