



Three Bedroom End of Terrace House

Windermere Walk, Camberley, GU15 1RP

Offers in excess of: £425,000 *Freehold*

- Three Bedrooms
- End of Terrace
- Corner Plot
- Scope to Extend (STPP)
- Refurbished
- Close to Local Schools
- Garage
- EPC: D (64)



Description

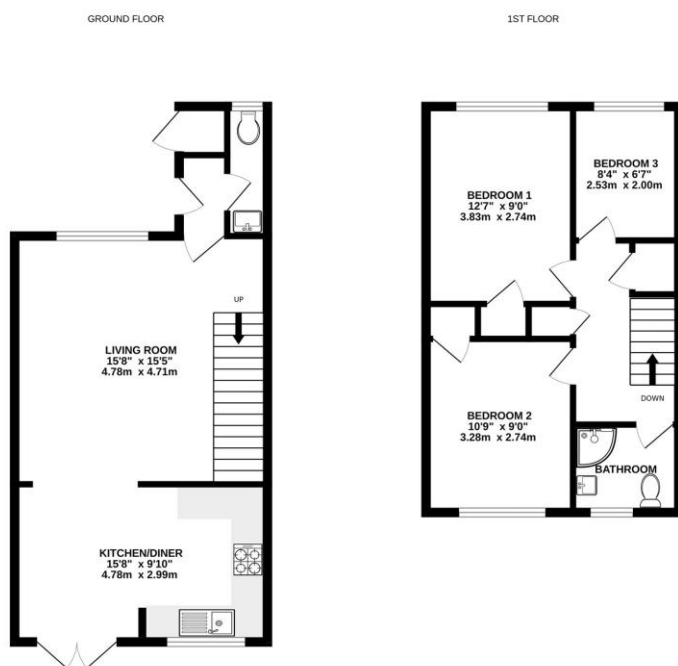
A fantastic opportunity to purchase a three bedroom end of terrace house which has undergone a substantial refurbishment, situated on the popular Heatherside development, located on a corner plot with huge scope to extend, subject to obtaining the necessary planning consents.

The property is conveniently located within walking distance of Heather Ridge, Ravenscote and Tomlinscote schools. Ground floor accommodation comprises living room, open plan kitchen/dining room and cloakroom. On the first floor there are three well proportioned bedrooms plus a refitted shower room.

Outside

The property is uniquely situated on a spacious corner plot offering extensive scope to extend, subject to obtaining the necessary planning consents. The garden is mainly laid to lawn, with a substantial terrace. There is a garage located in a nearby block.

Floorplan



While every attempt has been made to ensure the accuracy of the floorplan contained here, measurements of doors, windows, rooms and any other items are approximate and no responsibility is taken for any error, omission or mis-statement. This plan is for illustrative purposes only and should be used as such by any prospective purchaser. The services, systems and appliances shown have not been tested and no guarantee as to their operability or efficiency can be given.
Made with Metagor 12/2015



TO ARRANGE A VIEWING PLEASE CONTACT:

Tel: **01276 685544** or Email:
camberley@bridges.co.uk



Important Notice - These particulars are set out as a general outline only for the guidance of intended purchasers/tenants and do not form part of any offer or contract and must not be relied upon as statements or representations of fact. Purchasers/Tenants must satisfy themselves by inspection or otherwise as to their correctness.