

Four Bedroom Semi-Detached House

Castle Street, Fleet, Hampshire, GU52 7ST

Offers in excess of: £525,000

- Three/Four Bedrooms
- Character Home
- Versatile Living Space
- Driveway Parking
- Enclosed Garden
- Ideal for Al Fresco Dining
- Court Moor Catchment
- EPC: E (48)



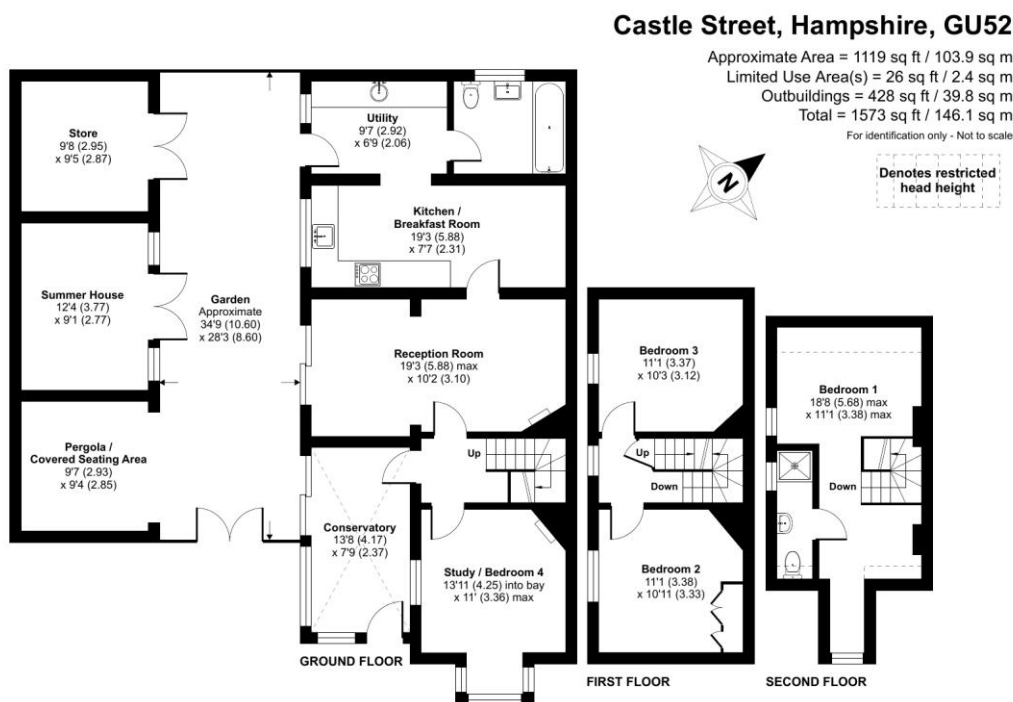
Description

A charming and characterful three/four bedroom family home situated within catchment of sought after local schools. The property boasts versatile living space across three floors along with a landscaped courtyard style garden and outbuildings such as a garden office/studio, store and covered pergola. The accommodation comprises a conservatory, entrance hallway, study room, living room, kitchen/breakfast room, utility room, and a family bathroom on the ground floor, whilst the first floor offers two double bedrooms and a stairway leading to the second floor where a further double bedroom and en suite shower room can be found. Viewings are highly recommended and strictly by appointment only.

Outside

The property offers driveway parking for multiple vehicles with a gated entrance to the enclosed courtyard style garden, which benefits from a south westerly aspect and offers a garden office/studio, store, and covered pergola/seating area, making it the ideal place for al fresco dining and entertaining in the summer.

Floorplan



Floor plan produced in accordance with RICS Property Measurement 2nd Edition, incorporating International Property Measurement Standards (IPMS2 Residential). © richcom 2025. Produced for Bridges Estate Agents. REF: 1256035

Bridges
Estate Agents

Bridges

TO ARRANGE A VIEWING PLEASE CONTACT:
 Tel: **01252 361550** or Email: **info@bridges.co.uk**



Important Notice - These particulars are set out as a general outline only for the guidance of intended purchasers/tenants and do not form part of any offer or contract and must not be relied upon as statements or representations of fact. Purchasers/Tenants must satisfy themselves by inspection or otherwise as to their correctness.