



Five Bedroom Detached House

Highclere Drive, Camberley, Surrey, GU15 1JY

Offers in Excess of: £700,000

- Five Bedrooms
- Approaching 1,900 Square Feet
- Conservatory
- Double Garage and Driveway
- Three Reception Rooms
- Close to Local Schools
- Enclosed Garden
- EPC: TBC



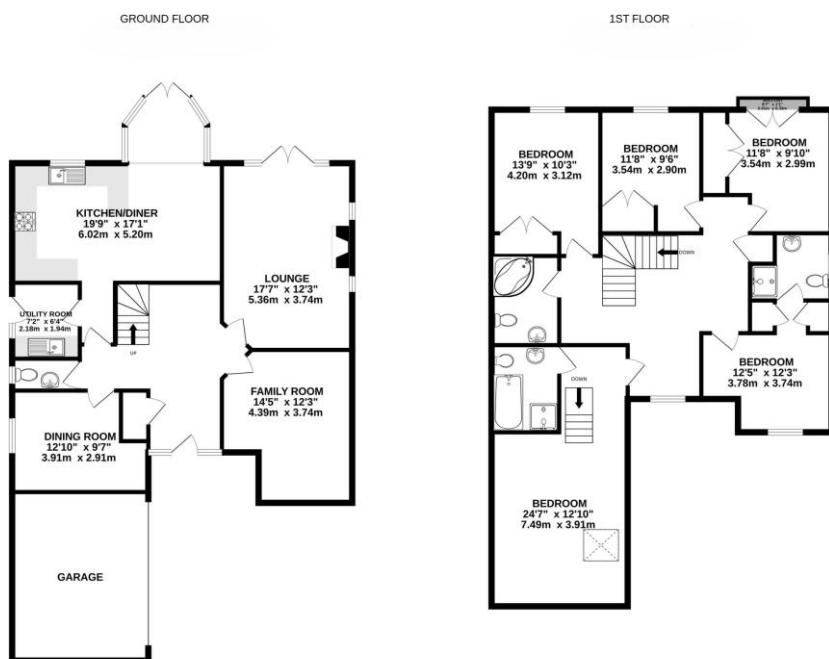
Description

A spacious Five bedroom detached house located in the sought after area of Highclere Drive, Camberley. The property requires some modernisation and presents an excellent opportunity to put your own stamp on a family home. The accommodation comprises of an open plan kitchen/breakfast room, utility room, conservatory, lounge, dining room, family room and cloakroom. To the first floor there are five bedrooms, two of which have en suites and a further family bathroom.

Outside

To the front of the property is a generous driveway offering extensive parking which leads to a double garage. The main garden to the rear is fully enclosed and is mainly lawned, with a generous patioed area ideal for outside entertaining.

Floorplan



Whilst every attempt has been made to ensure the accuracy of the floorplan contained here, measurements of doors, windows, rooms and any other items are approximate and no responsibility is taken for any error, omission or mis-statement. This plan is for illustrative purposes only and should be used as such by any prospective purchaser. The services, systems and appliances shown have not been tested and no guarantee as to their operability or efficiency can be given.
Made with Metropac ©2023



TO ARRANGE A VIEWING PLEASE CONTACT:

Tel: **01276 685544** or Email:

camberley@bridges.co.uk



Important Notice - These particulars are set out as a general outline only for the guidance of intended purchasers/tenants and do not form part of any offer or contract and must not be relied upon as statements or representations of fact. Purchasers/Tenants must satisfy themselves by inspection or otherwise as to their correctness.