



Three Bedroom Semi-Detached House

Mountbatten Mews, Camberley, Surrey, GU15 4LF

Price: £450,000

- Three Bedrooms
- Spacious Lounge
- Kitchen/Breakfast Room
- Driveway Parking for Two Vehicles
- Cul-de-Sac Location
- Private Garden
- Close to All Local Amenities
- EPC: C (75)



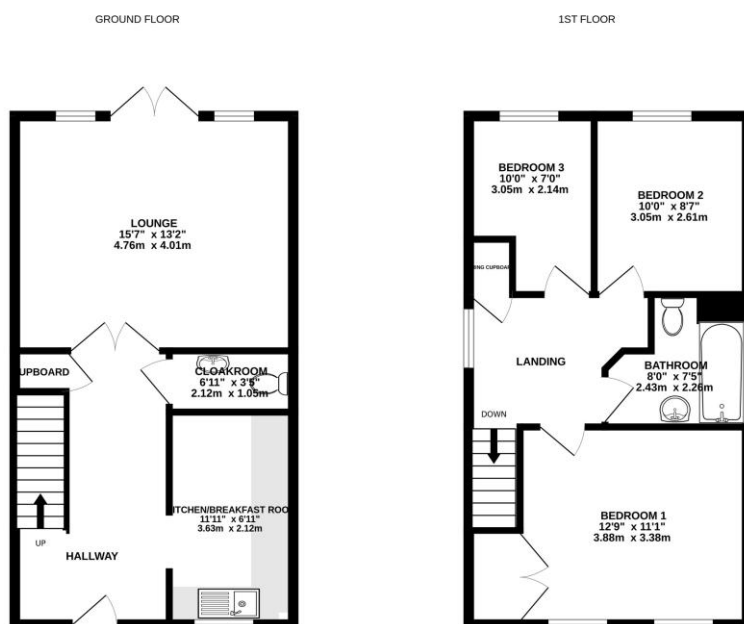
Description

Set within this cul-de-sac location stands this modern semi-detached three bedroom family home. The property is well located in Camberley town centre which is set within a short distance of the shopping centre, railway station, pubs, restaurants and local amenities. The ground floor accommodation comprises a generous entrance hall with a cloakroom, a modern kitchen/breakfast room and a spacious lounge room with French doors leading onto the garden. Upstairs comprises a sizable landing and two double bedrooms with a single third bedroom and a modern family bathroom. The property has gas fired heating with radiators and double glazed windows, there is also driveway parking to the front for two vehicles plus further visitor parking.

Outside

To the rear of the property, there is an attractive and private rear garden with a sizeable timber deck with a covered Pergola/Canopy ideal for al fresco dining, there is also a side access gate to the front with two courtesy lights. The remainder of the garden is lawned with attractive flowers shrub borders and a timber storage shed. To the front of the property, there is a lawned area and a double driveway with parking for two vehicles.

Floorplan



While every attempt has been made to ensure the accuracy of the floorplan contained here, measurements of doors, windows, rooms and any other items are approximate and no responsibility is taken for any error, omission or mis-statement. This plan is for illustrative purposes only and should be used on such by any prospective purchaser. The services, systems and appliances shown have not been tested and no guarantee as to their operability or efficiency can be given.
Made with Metropac 2002.



TO ARRANGE A VIEWING PLEASE CONTACT:

Tel: 01276 685544 or Email:

camberley@bridges.co.uk



Important Notice - These particulars are set out as a general outline only for the guidance of intended purchasers/tenants and do not form part of any offer or contract and must not be relied upon as statements or representations of fact. Purchasers/Tenants must satisfy themselves by inspection or otherwise as to their correctness.