

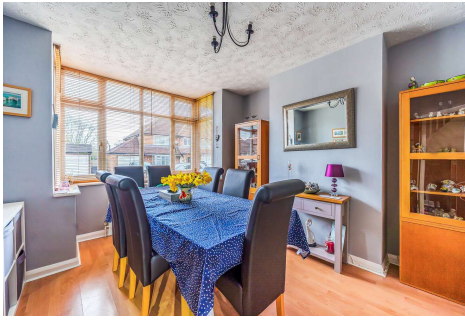
## Four Bedroom Semi-Detached House

### Liddington New Road, Guildford, Surrey, GU3 3AH

Offers in excess of: £600,000

- Four Bedroom Semi-Detached
- Three Reception Rooms
- En Suite
- Large Garden
- Driveway for Multiple Vehicles
- Garage
- Complete Chain Above
- EPC: TBC





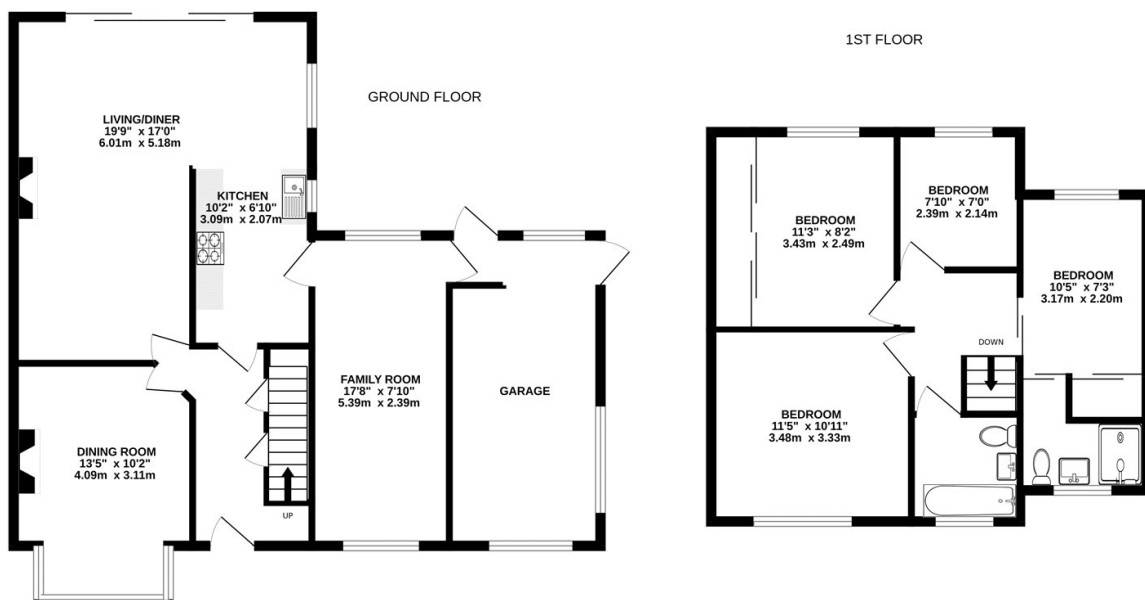
## Description

A rare opportunity to purchase this beautiful family home, located in one of Guildford's most popular residential roads. The house is ideally located, only a short walk from the local schools and within easy reach of Rydes Hill common. The property is also only a 10 minute drive into Guildford's town centre. The property downstairs boasts a large living room with pleasant views and doors which lead out into the garden - as well as a fitted kitchen, a separate dining room and an additional family room. Upstairs boasts four bedrooms, an en suite to the main bedroom and a family bathroom suite. Give us a call today to book your viewing for this stunning house.

## Outside

Outside the house boasts driveway parking for a number of vehicles, a garage and a beautiful large east facing garden.

## Floorplan



Whilst every attempt has been made to ensure the accuracy of the floorplan contained here, measurements of doors, windows, rooms and any other items are approximate and no responsibility is taken for any error, omission or mis-statement. This plan is for illustrative purposes only and should be used as such by any prospective purchaser. The services, systems and appliances shown have not been tested and no guarantee as to their operability or efficiency can be given.  
Made with Metropix ©2025



**TO ARRANGE A VIEWING PLEASE CONTACT:**  
Tel: **01252 361550** or Email: **info@bridges.co.uk**



**Important Notice - These particulars are set out as a general outline only for the guidance of intended purchasers/tenants and do not form part of any offer or contract and must not be relied upon as statements or representations of fact. Purchasers/Tenants must satisfy themselves by inspection or otherwise as to their correctness.**