



ALDRSHOT ROAD | ASH


**Platinum
Homes**
BY BRIDGES



The Property

Offered to the market, with no onward chain complications, is this six bedroom detached family house which is located in the desirable village of Ash.

The property has been extensively extended and refurbished by the current owners offering spacious living over three floors.

The ground floor is equipped with underfloor heating and features three reception rooms, including a study, a snug, and an expansive living/dining room spanning the entire width of the property with bi-folding doors to the garden.

To the first floor are four double bedrooms, one with an en suite, and a spacious family bathroom.

The top floor is dedicated to the principal suite with its own private dressing room and an en suite bathroom.

Outside

The front of the property is enclosed by a low level brick wall with shrub borders.

The property is situated on a plot of just under a quarter of an acre and is within walking distance of Ash Village. For larger towns, Farnham is within a ten minute drive, and Guildford is within a twenty minute drive.



Features

- Six Bedrooms
- Detached House
- Four Reception Rooms
- Five Bathrooms
- Extended and Refurbished Throughout
- Detached Self Contained Annexe
- Block Paved Driveway
- EPC: C (76)
- Council Tax Band: TBC

Contact

Philip Gascoyne

pgascoyne@platinumbybridges.co.uk

01252 975501



Aldershot Road, Ash, Aldershot, GU12

Approximate Area = 3155 sq ft / 293.1 sq m

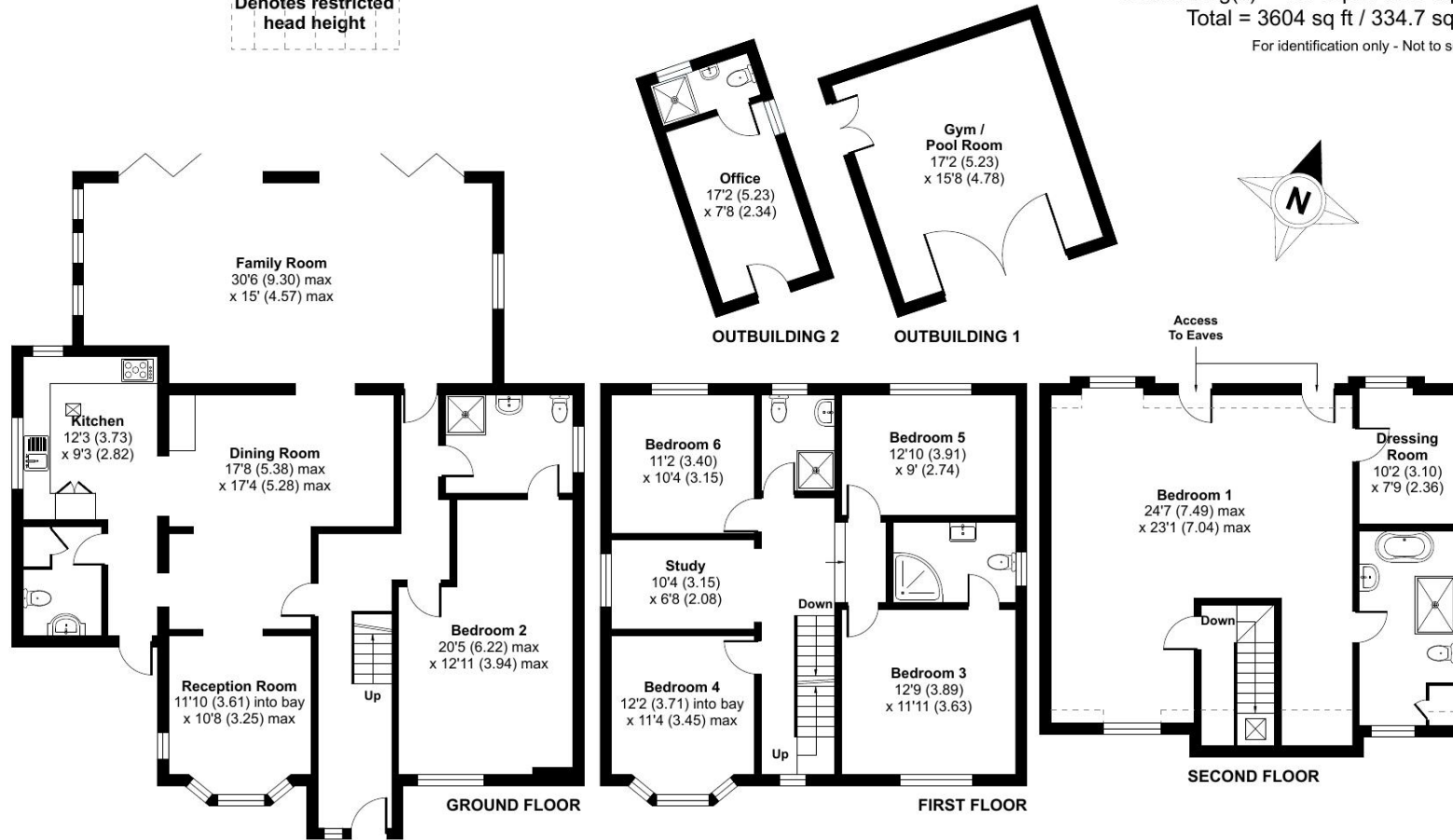
Limited Use Area(s) = 48 sq ft / 4.4 sq m

Outbuilding(s) = 401 sq ft / 37.2 sq m

Total = 3604 sq ft / 334.7 sq m

For identification only - Not to scale

Denotes restricted head height



Floor plan produced in accordance with RICS Property Measurement Standards incorporating International Property Measurement Standards (IPMS2 Residential). © nitchcom 2024. Produced for Bridges Estate Agents Ltd (Platinum Homes). REF: 1088477



Important Notice - These particulars are set out as a general outline only for the guidance of intended purchasers and do not form part of any offer or contract and must not be relied upon as statements or representations of fact. Purchasers must satisfy themselves by inspection or otherwise as to their correctness.

