



## Two Bedroom Maisonette

**Kenilworth Road, Fleet, Hampshire, GU51 3AY**

Price: £300,000

- Two Bedrooms
- First Floor Maisonette
- Garage and Driveway
- Enclosed Garden
- Walking Distance of Station
- Highly Desirable Location
- Walking Distance of Fleet Pond
- EPC: TBC



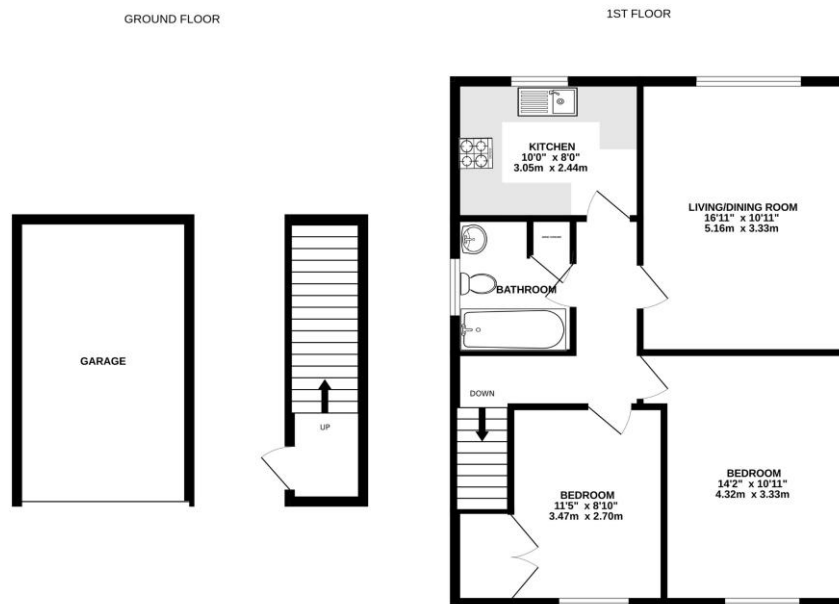
## Description

Ideally located in the popular Pondtail area of Fleet is this wonderful first floor maisonette with a private garden. Stairs upon entry lead you up to the apartment, where two spacious bedrooms, with built-in storage, are offered. The property also boasts a light and spacious living area, with a modern kitchen and family bathroom.

## Outside

Situated within walking distance of Fleet Pond, in the popular Pondtail area of Fleet, with both driveway parking and a garage. The property benefits from a private and enclosed garden, which is currently laid to lawn.

## Floorplan



Whilst every attempt has been made to ensure the accuracy of the floorplan contained herein, measurements of doors, windows, rooms and any other items are approximate and no responsibility is taken for any error, omission or mis-statement. This plan is for illustrative purposes only and should be used as such by any prospective purchaser. The services, systems and appliances shown have not been tested and no guarantee as to their operability or efficiency can be given.  
Made with Metropix ©2025



**TO ARRANGE A VIEWING PLEASE CONTACT:**  
Tel: **01252 361550** or Email: **info@bridges.co.uk**



**Important Notice** - These particulars are set out as a general outline only for the guidance of intended purchasers/tenants and do not form part of any offer or contract and must not be relied upon as statements or representations of fact. Purchasers/Tenants must satisfy themselves by inspection or otherwise as to their correctness.