



## One Double Bedroom End of Terrace House

**Wingfield Gardens, Camberley, Surrey, GU16 9QD**

Price: £250,000

- One Double Bedroom
- End of Terrace House
- Bathroom
- No Onward Chain
- Parking
- Private Garden
- Freehold
- EPC: D (68)





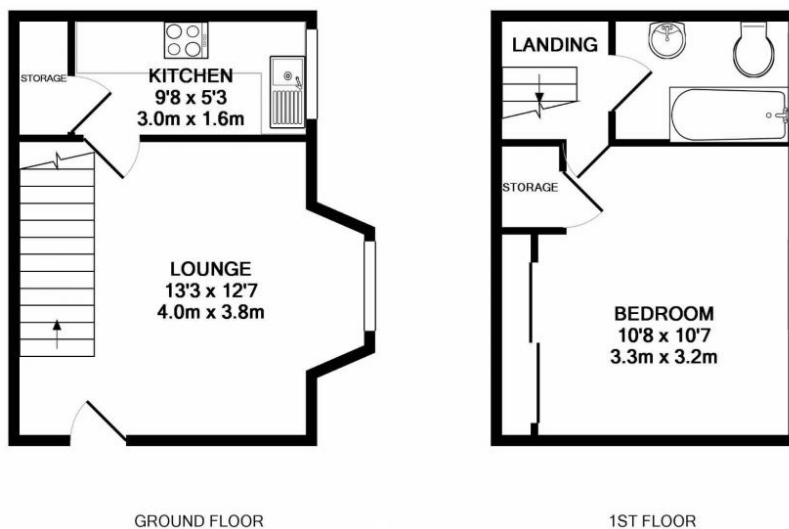
## Description

A one double bedroom 'back to back' house situated on the popular Cheylesmore Park development within walking distance of fantastic green spaces and excellent local schools including Heather Ridge and Ravenscote. The property accommodation comprises a living room/dining room as you enter, a separate kitchen, a bathroom and a double bedroom with a built-in wardrobe. Further benefits include uPVC double glazing, garden and parking.

## Outside

There is communal parking in the cul-de-sac. The garden wraps around the property and sides onto a beautiful open greenspace.

## Floorplan



Whilst every attempt has been made to ensure the accuracy of the floor plan contained here, measurements of doors, windows, rooms and any other items are approximate and no responsibility is taken for any error, omission, or mis-statement. This plan is for illustrative purposes only and should be used as such by any prospective purchaser. The services, systems and appliances shown have not been tested and no guarantee as to their operability or efficiency can be given.  
Made with Metropix ©2019



**TO ARRANGE A VIEWING PLEASE CONTACT:**  
Tel: **01252 361550** or Email: **info@bridges.co.uk**



**Important Notice** - These particulars are set out as a general outline only for the guidance of intended purchasers/tenants and do not form part of any offer or contract and must not be relied upon as statements or representations of fact. Purchasers/Tenants must satisfy themselves by inspection or otherwise as to their correctness.