



Two Bedroom Terraced Apartment

Douglas Court, Fleet Road, Fleet, Hampshire, GU51 4QQ

Price: £260,000

- Two Bedrooms
- En Suite Bathroom
- Allocated Parking
- 120 Years of Lease
- Gated Development
- No Onward Chain
- Close to Fleet Train Station
- EPC: B (81)



Description

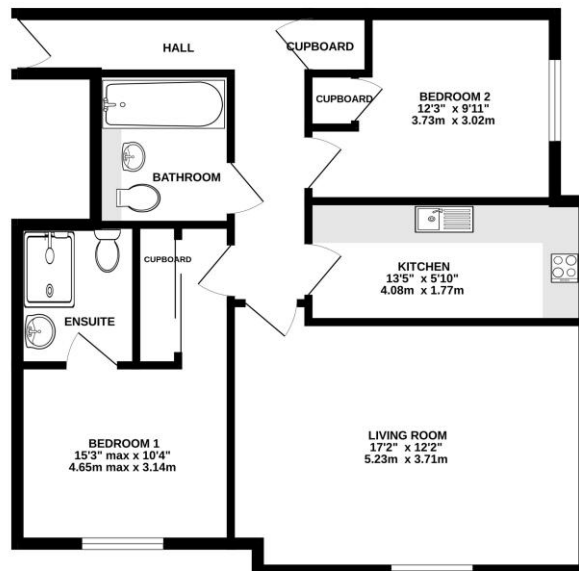
This modern first floor apartment situated in a gated development, with allocated parking. Offered to the market with no onward chain and in good decorative order throughout and benefits from a long lease, as well as easy access to the railway station and being within walking distance of the town centre. The accommodation comprises of a communal entrance hall with an intercom entry system, internal hallway, living/dining room, kitchen, bathroom and two double bedrooms, one of which boasts the benefit of having an en suite shower room. Viewings are highly advised and strictly by appointment only.

Outside

The property offers a gated entrance to the communal car park where you will benefit from an allocated parking space as well as use of the visitors parking spaces.

Floorplan

GROUND FLOOR



While every attempt has been made to ensure the accuracy of the floorplan contained herein, measurements of doors, windows, rooms and any other items are approximate and no responsibility is taken for any error, omission or mis-statement. This plan is for illustrative purposes only and should be used as such by any prospective purchaser. The services, systems and appliances shown have not been tested and no guarantee as to their operability or efficiency can be given.
Made with Metropix 10000



TO ARRANGE A VIEWING PLEASE CONTACT:
Tel: **01252 361550** or Email: **info@bridges.co.uk**



Important Notice - These particulars are set out as a general outline only for the guidance of intended purchasers/tenants and do not form part of any offer or contract and must not be relied upon as statements or representations of fact. Purchasers/Tenants must satisfy themselves by inspection or otherwise as to their correctness.