



Two Bedroom Maisonette

Lye Copse Avenue, Farnborough, Hampshire, GU14 8DZ

Price: £275,000

- Two Bedrooms
- Ground Floor Maisonette
- Well Presented Throughout
- Modern Kitchen and Bathroom
- Enclosed Rear Garden
- Gas Radiators and Double Glazing
- Ideal First Buy/Investment
- EPC: C (73)



Description

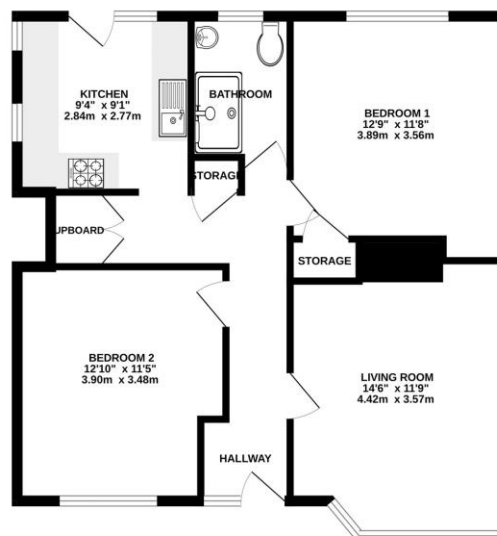
This spacious ground floor maisonette with its own private rear garden. The property itself benefits from having two double bedrooms as well as a good sized living room and a modern refitted kitchen and bathroom, long lease, double glazing and gas radiator heating. The property is located between Hawley and Farnborough and benefits from excellent local amenities. IDEAL INVESTMENT/FIRST BUY.

Outside

An enclosed rear garden consisting of a hard stand and shingle area, raised steps leading to decking, shaped lawn, decorative flower beds, outside tap, brick shed all enclosed by wood panel fencing.

Floorplan

GROUND FLOOR



Whilst every attempt has been made to ensure the accuracy of the floorplan contained here, measurements of doors, windows, rooms and any other items are approximate and no responsibility is taken for any error, omission or misstatement. This plan is for guidance purposes only and should be used as such by any prospective purchaser. The services, systems and equipment shown here are for information only and no guarantee (as to their operability or efficiency) can be given. Made with Hoxby 12/02



TO ARRANGE A VIEWING PLEASE CONTACT:
Tel: **01252 361550** or Email: **info@bridges.co.uk**



Important Notice - These particulars are set out as a general outline only for the guidance of intended purchasers/tenants and do not form part of any offer or contract and must not be relied upon as statements or representations of fact. Purchasers/Tenants must satisfy themselves by inspection or otherwise as to their correctness.