



## Two Bedroom Terraced House

**Lyndsey Close, Farnborough, Hampshire, GU14 9TG**

**Offers in Excess of: £365,000**

- Two Double Bedrooms
- Sought After Location
- Easy Access to M3 and Mainline Rail Stations
- Garage
- Parking
- Well Presented
- Ideal for First Time Buyers and Young Professionals
- EPC: TBC





## Description

A beautiful two double bedroom family home set in a sought after cul-de-sac location in the ever popular Chatfield Park development.

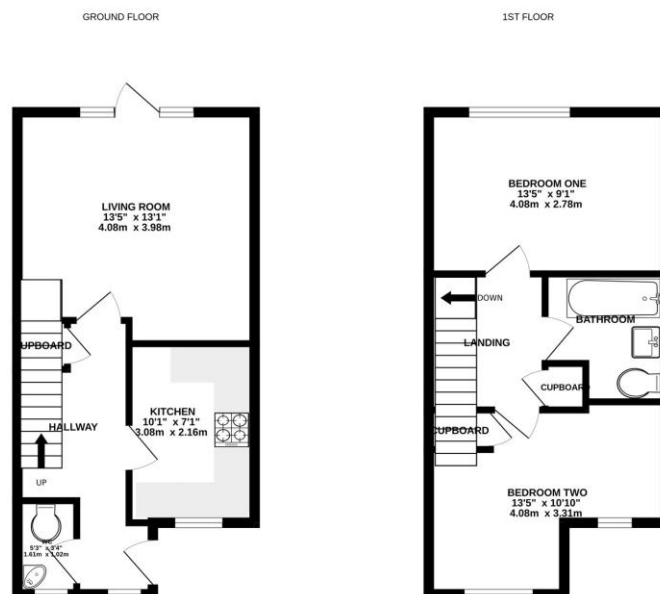
Ground floor accommodation compromises of a good sized entrance hallway, fitted kitchen to the front, a bright and welcoming lounge/diner with doors leading out to the patio and garden and also benefitting from a downstairs cloakroom. Upstairs you will find two generous double bedrooms and a immaculate three piece family bathroom that has recently been installed.

Viewings are highly recommended and strictly by appointment only!

## Outside

The property boasts a well presented and beautifully designed garden with a stylish patio area and pathway leading down to the gated exit toward the parking and garage area.

## Floorplan



LYNDESEY CLOSE, FARNBOROUGH.

Whilst every attempt has been made to ensure the accuracy of the floorplan contained here, measurements of doors, windows, stairs and any other items are approximate and no responsibility is taken for any error, omission or misstatement. This plan is for illustrative purposes only and should be used as such by any prospective purchaser. The services, systems and appliances shown have not been tested and no guarantee as to their operation is intended or implied. Made with Metreplan (2025)



TO ARRANGE A VIEWING PLEASE CONTACT:  
Tel: **01252 361550** or Email: **info@bridges.co.uk**



Important Notice - These particulars are set out as a general outline only for the guidance of intended purchasers/tenants and do not form part of any offer or contract and must not be relied upon as statements or representations of fact. Purchasers/Tenants must satisfy themselves by inspection or otherwise as to their correctness.