

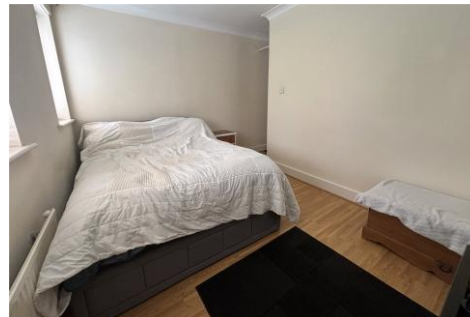


Three Bedroom Semi-Detached House

Greenfield Road, Farnham, Surrey, GU9 8TJ

Price: £450,000

- Three Bedrooms
- Semi-Detached House
- Close to Popular Schools
- Kitchen/Breakfast Room
- South Facing Garden
- Scope to Extend STPP
- Driveway
- EPC: D (68)



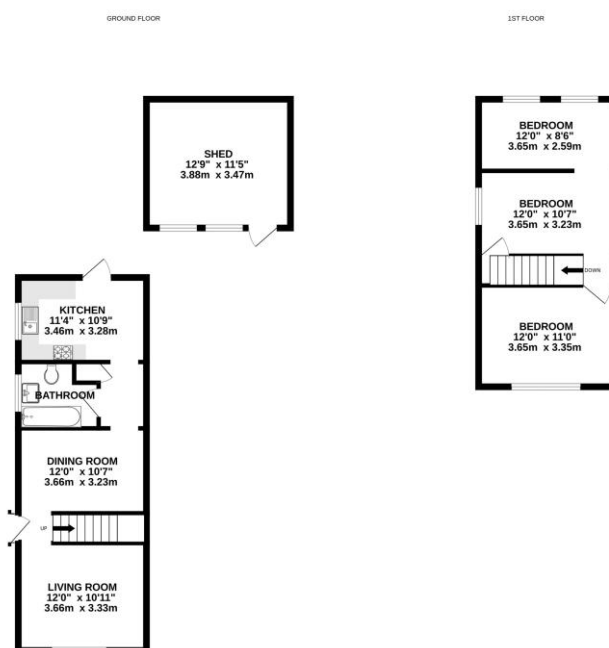
Description

Available to the market is this three double bedroom semi-detached family home ideally situated within walking distance to sought after schools. The property comprises a welcoming entrance which provides access to a spacious front aspect lounge area, and a dining room with a feature fireplace, in turn leading to a kitchen/breakfast room with sliding doors to the rear garden. The upstairs consists of three well proportioned double bedrooms.

Outside

Externally you benefit from a spacious driveway that is great for multiple vehicles. The south facing rear garden is mostly laid to lawn, featuring a patio area perfect for entertaining guests and a garden shed for storage.

Floorplan



Whilst every effort has been made to ensure the accuracy of the floorplan contained herein, measurements of doors, windows, rooms and any other items are approximate and no responsibility is taken for any errors, omissions or mis-statements. This plan is for illustrative purposes only and should be used as such for any prospective purchaser. The services, systems and appliances shown here are not shown to scale and no guarantee as to their operability or efficiency can be given.
Made with Metaphor (2022)



TO ARRANGE A VIEWING PLEASE CONTACT:
Tel: **01252 361550** or Email: **info@bridges.co.uk**



Important Notice - These particulars are set out as a general outline only for the guidance of intended purchasers/tenants and do not form part of any offer or contract and must not be relied upon as statements or representations of fact. Purchasers/Tenants must satisfy themselves by inspection or otherwise as to their correctness.