



Three Bedroom Terraced House

Lyall Place, Farnham, Surrey, GU9 0EQ

Price: £335,000

- Three Double Bedrooms
- Kitchen/Diner
- Utility Space
- Good Decorative Order
- Private Front and Rear Gardens
- Close to Farnham Park
- Close to Caesar's Camp
- EPC: D (58)



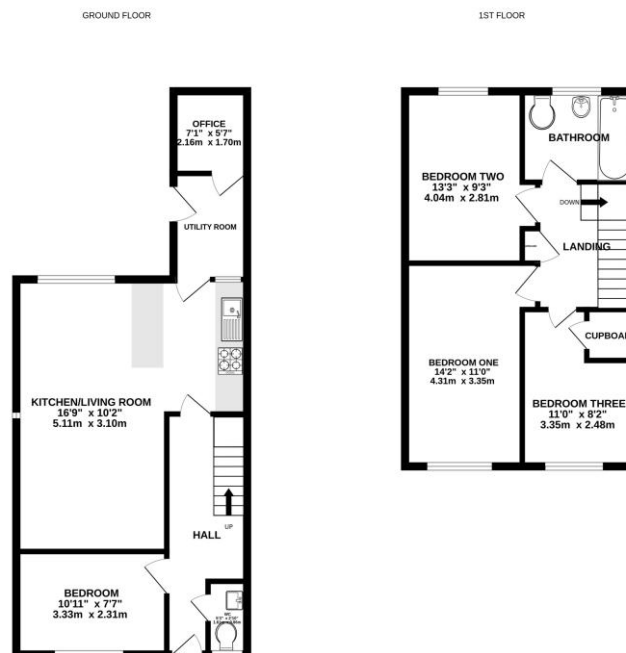
Description

This spacious three bedroom terraced property, overlooking the green, is now available on the market. Offering airy and versatile living throughout, the downstairs accommodation includes a generous lounge, kitchen/diner, and an additional fourth bedroom. At the rear, there is a lean to with a utility area and home office space. The first floor comprises three bedrooms, two of which are sizeable doubles, along with the family bathroom. The property also benefits from double glazing and gas central heating.

Outside

The property is situated within close proximity to popular schools for all ages, as well as shops and dog walking routes such as Caesar's Camp and Farnham Park leading you into Farnham town centre.

Floorplan



Whilst every attempt has been made to ensure the accuracy of the floorplan contained herein, measurements of doors, windows, rooms and any other items are approximate and no responsibility is taken for any error, omission or mis-statement. This plan is for illustrative purposes only and should be used as such for any prospective purchaser. The services, repairs and appliances shown have not been tested and no guarantee as to their operability or efficiency can be given.
Made with MapInfo 12.0.2



TO ARRANGE A VIEWING PLEASE CONTACT:
Tel: **01252 361550** or Email: **info@bridges.co.uk**



Important Notice - These particulars are set out as a general outline only for the guidance of intended purchasers/tenants and do not form part of any offer or contract and must not be relied upon as statements or representations of fact. Purchasers/Tenants must satisfy themselves by inspection or otherwise as to their correctness.