



Two Bedroom Semi-Detached House

Tump View, Crookham Village, Fleet, Hampshire, GU51 5EQ

Price: £450,000

- Two Bedrooms
- Hareshill Development
- No Chain
- Double Length Driveway
- Enclosed Rear Garden
- NHBC Warranty
- Viewing Advised
- EPC: B (89)



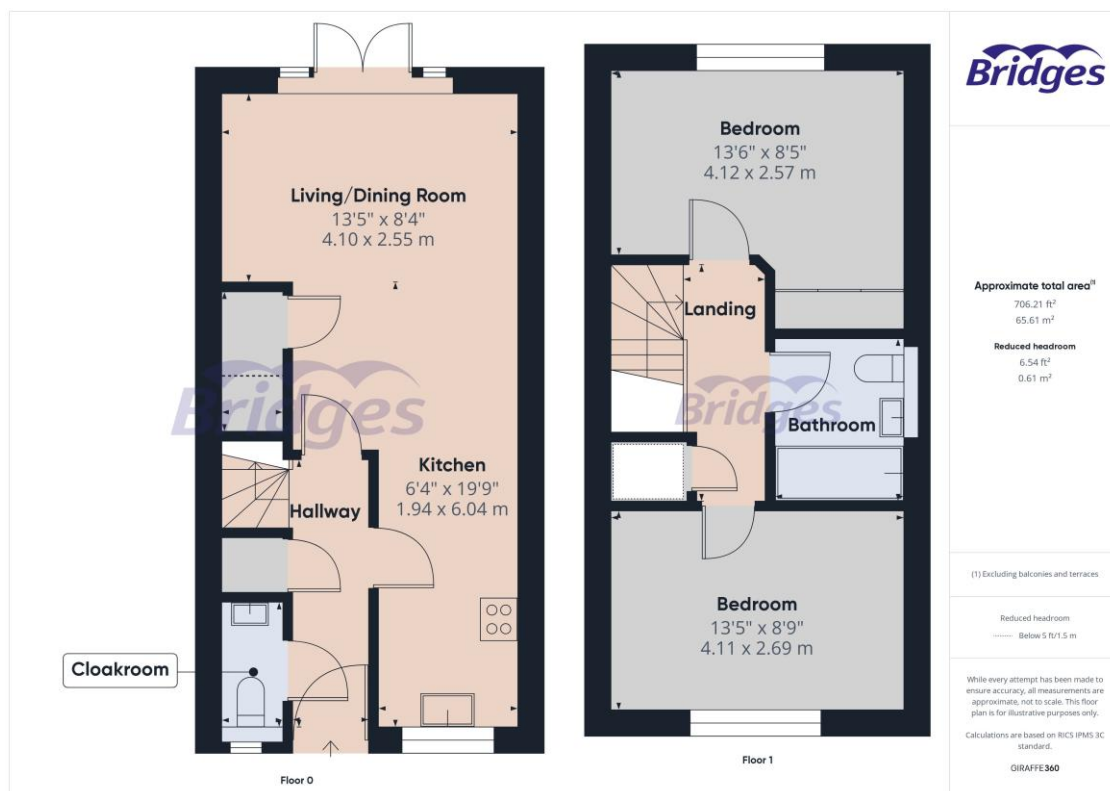
Description

A simply stunning two bedroom semi-detached home, constructed by Berkley Homes to their Brackens design and situated within the highly desirable "Hareshill" development, offered to the market with no onward chain and ready to occupy immediately. The accommodation comprises: an entrance hall, cloakroom, laundry cupboard, a fully integrated kitchen, and an open plan living/dining room with French doors to the rear garden. The first floor offers a family bathroom and two double bedrooms with fitted wardrobes to principal bedroom. Viewings are highly recommended and strictly by appointment only.

Outside

The property offers a block paved driveway with parking for multiple vehicles and a side gate provides access to the enclosed rear garden which offers a patio seating area. The remainder is laid to lawn with the addition of a garden shed.

Floorplan



TO ARRANGE A VIEWING PLEASE CONTACT:
Tel: **01252 361550** or Email: **info@bridges.co.uk**



Important Notice - These particulars are set out as a general outline only for the guidance of intended purchasers/tenants and do not form part of any offer or contract and must not be relied upon as statements or representations of fact. Purchasers/Tenants must satisfy themselves by inspection or otherwise as to their correctness.