

## Three Bedroom Semi-Detached House

**Maybury Close, Frimley, Camberley, Surrey, GU16 7HH**

Price: £425,000

- Three Double Bedrooms
- Two Reception Rooms
- Separate Kitchen
- Ground Floor Cloakroom
- Generous Garden
- Scope to Enlarge (STPP)
- No Onward Chain
- EPC: TBC



## Description

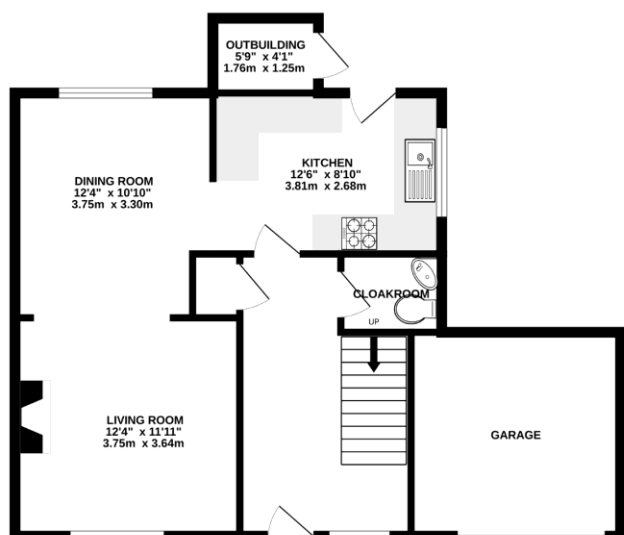
A three bedroom semi-detached family home offering flexible accommodation and ideally located in a sought after location, being within easy reach of Frimley high street and good schools. The accommodation comprises an entrance hallway leading to the living room with a feature fireplace, open plan through to the dining room with a door to the kitchen which is fitted with a range of base and eye level units, and the cloakroom completes the ground floor. To the first floor you have three double bedrooms and a family bathroom. The property further benefits from gas central heating, uPVC double glazing, and scope to enlarge (STPP).

## Outside

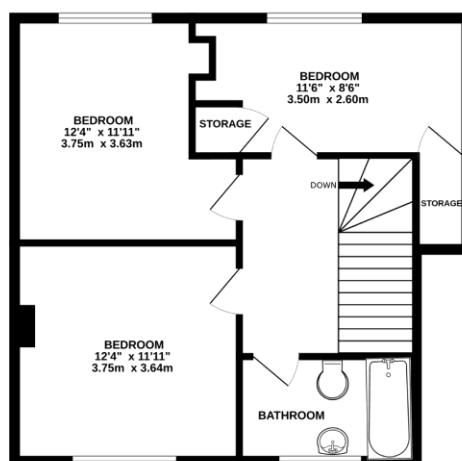
To the front is parking for multiple vehicles and a garage. There is side access to the rear garden with a patio area, an outbuilding, and a mainly laid to lawn garden.

## Floorplan

GROUND FLOOR



1ST FLOOR



Whilst every attempt has been made to ensure the accuracy of the floorplan contained here, measurements of doors, windows, rooms and any other items are approximate and no responsibility is taken for any error, omission or mis-statement. This plan is for illustrative purposes only and should be used as such by any prospective purchaser. The services, systems and appliances shown have not been tested and no guarantee as to their operability or efficiency can be given.  
Made with Metropix ©2025



**TO ARRANGE A VIEWING PLEASE CONTACT:**  
Tel: **01252 361550** or Email: **info@bridges.co.uk**



**Important Notice - These particulars are set out as a general outline only for the guidance of intended purchasers/tenants and do not form part of any offer or contract and must not be relied upon as statements or representations of fact. Purchasers/Tenants must satisfy themselves by inspection or otherwise as to their correctness.**