



## Five Bedroom Detached House

**Cotswold Close, Farnborough, Hampshire, GU14 9ET**

**Price: £700,000**

- Five Bedrooms
- Close to Woodland
- Close to Schools
- Two En Suites
- Three Reception Rooms
- Garage
- Driveway
- EPC: TBC





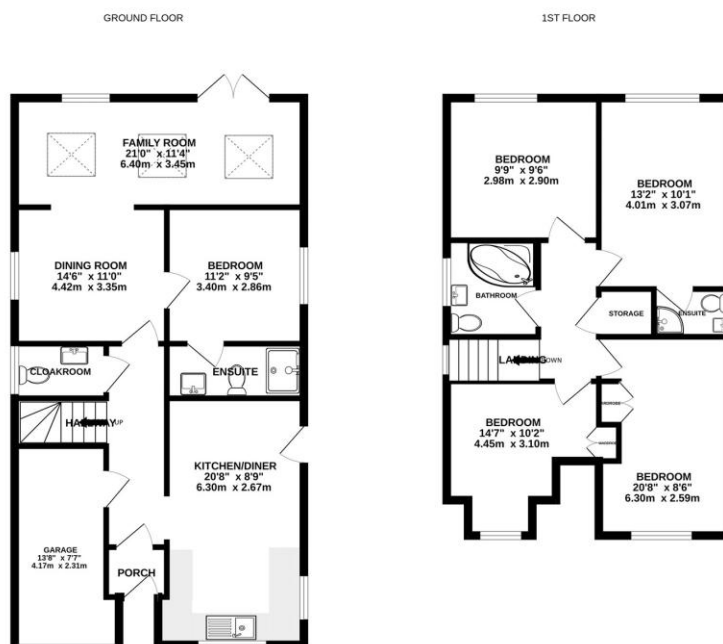
## Description

Bridges are excited to bring to the market this beautifully presented five bedroom detached family home. The property can be found in the ever popular Westfields development in the heart of Cove, and is within walking distance to well regarded schools, amenities and Hawley Lake, perfect for dog walking! On arrival to the property, you are greeted with driveway parking for at least three cars, as well as integral garage built into the property, offering ample parking for a growing family. This property is deceptively spacious, and the ground floor consists of an open plan kitchen diner, complete with built in appliances and access to the garden, downstairs cloakroom, separate dining room as well as family room that spans the width of the rear of the property, complete with sky lights bringing in that natural light, with double doors opening up to the rear garden. Finally downstairs, you also have one of the five bedrooms and an en suite bathroom. Upstairs footprint consists of four double bedrooms, all tastefully decorated, an en suite to the principal bedroom and a good sized modern family bathroom. The rear garden is peaceful and private, as well as easily maintained due to the majority of the space being laid with modern lawn and a well kept patio, with the BBQ and garden seating area laid with artificial grass. Viewings are highly recommended to appreciate the size and space, by appointment only!

## Outside

The rear garden is peaceful and private, as well as easily maintained due to the majority of the space being laid with modern and well kept patio, with the BBQ and garden seating area laid with artificial grass.

## Floorplan



Whilst every attempt has been made to ensure the accuracy of the description contained here, measurements of floor, wall, ceiling and any other items are approximate and no responsibility is taken for any error, omission or mis-statement. This plan is for illustrative purposes only and should be used as such by any prospective purchaser. The services, systems and appliances shown have not been tested and no guarantee as to their operability or efficiency can be given. Made with Metaphor CADD.



TO ARRANGE A VIEWING PLEASE CONTACT:  
Tel: **01252 361550** or Email: **info@bridges.co.uk**



Important Notice - These particulars are set out as a general outline only for the guidance of intended purchasers/tenants and do not form part of any offer or contract and must not be relied upon as statements or representations of fact. Purchasers/Tenants must satisfy themselves by inspection or otherwise as to their correctness.