



Three Bedroom Semi-Detached House

Boundstone Close, Wrecclesham, Farnham, Surrey, GU10 4RW

Guide Price: £550,000

- Three Bedrooms
- Living Room
- Kitchen/Diner
- Utility
- Garage
- Highly Desirable Location
- Refurbishment Opportunity
- EPC: D (63)



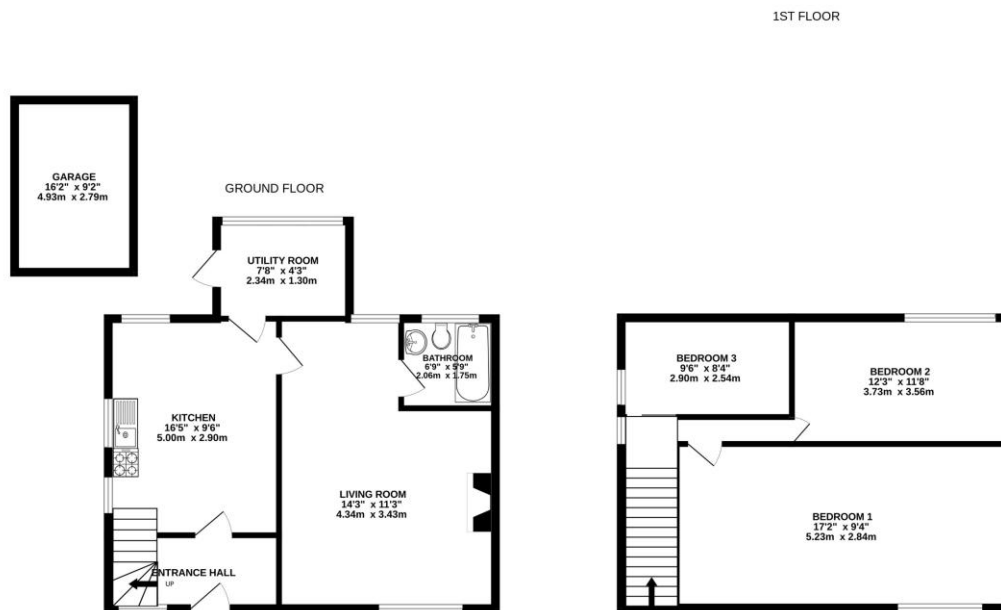
Description

A three bedroom semi-detached property with a good sized level garden tucked away in a cul-de-sac position to the favoured south side of Farnham is offered to the market with no onward chain and with potential to extend (subject to planning permissions). To the ground floor there is the original kitchen/diner, utility room, spacious living room, and the bathroom. To the first floor there are three bedrooms. This property requires a full refurbishment throughout and offers great opportunity to make your own!

Outside

To the front of the property is lawn and driveway parking leading to the garage. The private rear garden is mainly laid to lawn with a selection of shrubs and the garden is enclosed by panel fencing.

Floorplan



Whilst every attempt has been made to ensure the accuracy of the floorplan contained here, measurements of doors, windows, rooms and any other items are approximate and no responsibility is taken for any error, omission or mis-statement. This plan is for illustrative purposes only and should be used as such by any prospective purchaser. The services, systems and appliances shown have not been tested and no guarantee as to their operability or efficiency can be given.
Made with Metropix 6/20/25



TO ARRANGE A VIEWING PLEASE CONTACT:
Tel: **01252 361550** or Email: **info@bridges.co.uk**



Important Notice - These particulars are set out as a general outline only for the guidance of intended purchasers/tenants and do not form part of any offer or contract and must not be relied upon as statements or representations of fact. Purchasers/Tenants must satisfy themselves by inspection or otherwise as to their correctness.