



Three Bedroom Semi-Detached House

West Heath Road, Farnborough, Hampshire, GU14 8QR

Offers in excess of: £500,000 *Freehold*

- Three Bedrooms
- Popular Location
- No Onward Chain
- Modern Finish
- Garage/Workshop
- Ample Driveway Parking
- Enclosed Rear Garden
- EPC: C (69)



Description

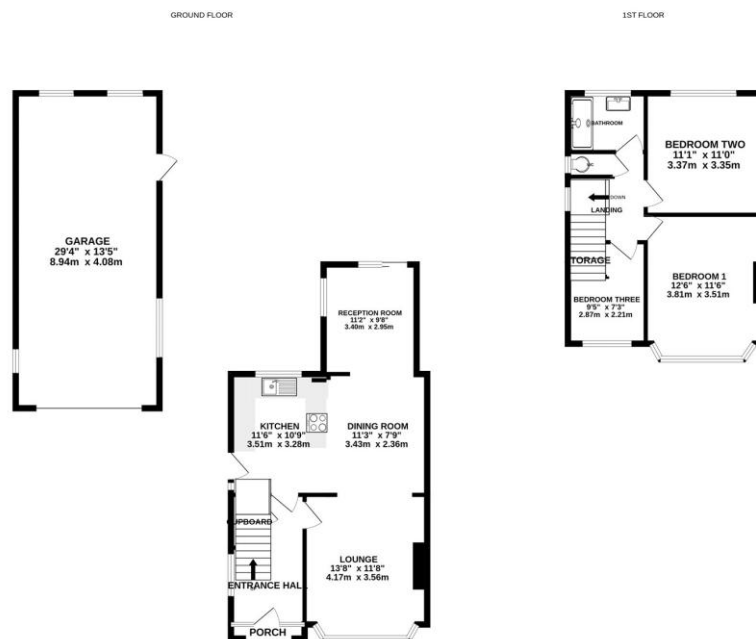
Situated in the popular West Heath area of Farnborough is this extended three bedroom semi-detached family home. The property benefits from a stylish open plan ground floor design, a sleek kitchen with built-in appliances, a spacious dining area leading through to a cozy main lounge with a log burner. Leading upstairs, you will find two spacious double bedrooms, a separate toilet and bathroom and a further bedroom overlooking the front. The property is ideally located for easy access to Farnborough main line train station, local amenities and well regarded local schools.

Outside

To the front of the property there is block paved parking for approximately four vehicles.

The enclosed rear garden consists of a paved patio area ideal for outdoor dining and a detached garage/workshop to the side.

Floorplan



Whilst every attempt has been made to ensure the accuracy of the floorplan contained here, measurements of doors, windows, rooms and any other items are approximate and no responsibility is taken for any error, omission or mis-statement. This plan is for illustrative purposes only and should be used as such by any prospective purchaser. The services, systems and appliances shown have not been tested and no guarantee as to their operability or efficiency can be given.
Made with Metrepro CADD.



TO ARRANGE A VIEWING PLEASE CONTACT:
Tel: **01252 361550** or Email: **info@bridges.co.uk**



Important Notice - These particulars are set out as a general outline only for the guidance of intended purchasers/tenants and do not form part of any offer or contract and must not be relied upon as statements or representations of fact. Purchasers/Tenants must satisfy themselves by inspection or otherwise as to their correctness.