



Four Bedroom Detached House

Bramshott Drive, Hook, Hampshire, RG27 9EY

Price: £575,000

- Four Bedrooms
- Detached Family Home
- Refitted Kitchen
- Cloakroom and Bathroom
- Close to the Village Centre
- Rear Garden Approximately 80 Feet
- Garage and Ample Parking
- EPC: E (52)



Description

Conveniently positioned near the village centre, this detached four bedroom home offers easy access to highly regarded schools, a London mainline railway station, the local Tesco and Sainsburys supermarkets plus a host of local shops, with swift entry to the M3 motorway via Junction five. Boasting a recently refitted kitchen featuring AEG twin ovens, a gas hob, and a stylish cooker hood, along with a selection of integrated appliances, it's perfect for those who love cooking at home. The spacious living room spans the full width of the house, featuring a sizable picture window and patio doors that open to views of the garden, providing ample space for a dining table and chairs. Additional highlights include a ground floor cloakroom, a first floor bathroom with modern white suites, and a private south facing rear garden measuring approximately 80 feet. A generously sized front garden offers plenty of off road parking, making it ideal for anyone looking to accommodate a recreational vehicle. There is also potential to extend subject to planning permission.

Outside

The rear garden is particular feature of this home, it offers a great degree of privacy as it is enclosed with mature shrubs and panel fencing, there is a sizable patio area and step up leading to a the lawned part of the garden, at the end of the garden is decked and slate chipping area ideal for gathering with friends to enjoy the garden. There is a garage to the side with an up and over door with lights and power with a further door to the rear garden. To the front there is a spacious driveway providing off road parking for several vehicles laid to herringbone block paving with a shaped lawned area and a mature hedgerow providing further privacy.

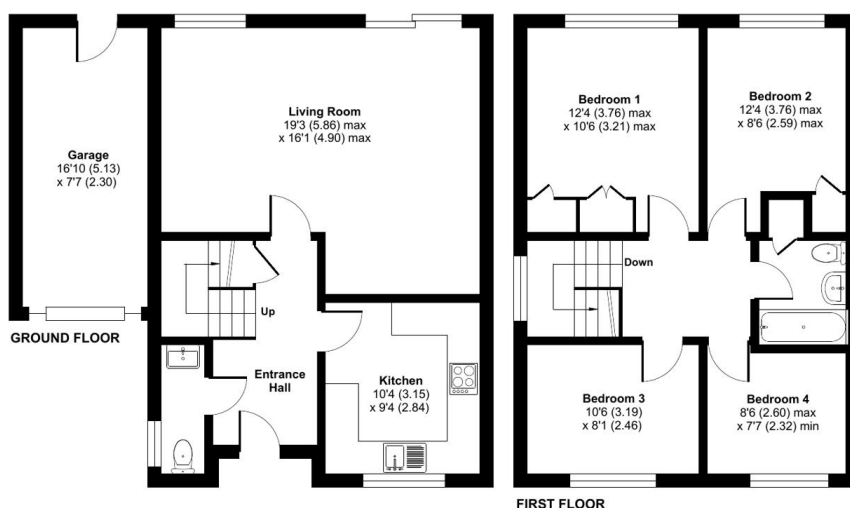
To view the Material Information Certificate for this property please click [Here](#) or contact us to request a copy

Floorplan



Bramshott Drive, Hook, Hampshire, RG27

Approximate Area = 1022 sq ft / 94.9 sq m
Garage = 127 sq ft / 11.7 sq m
Total = 1149 sq ft / 106.6 sq m
For identification only - Not to scale



Floor plan produced in accordance with RICS Property Measurement 2nd Edition, incorporating International Property Measurement Standards (IPMS2 Residential). © nrichcom 2025. Produced for Bridges Estate Agents. REF: 1264828



TO ARRANGE A VIEWING PLEASE CONTACT:
Tel: **01256 769999** or Email: **info@bridges.co.uk**



Important Notice - These particulars are set out as a general outline only for the guidance of intended purchasers/tenants and do not form part of any offer or contract and must not be relied upon as statements or representations of fact. Purchasers/Tenants must satisfy themselves by inspection or otherwise as to their correctness.