



Four Bedroom Detached House Ashlea, Hook, Hampshire, RG27 9RQ

Guide Price: £640,000

- Four Bedrooms
- Open Plan Kitchen/Diner
- Well Maintained Garden
- Double Garage
- Solar Panels
- Walking Distance to the Village
- Potential to Extend (STPP)
- EPC: C (69)



Description

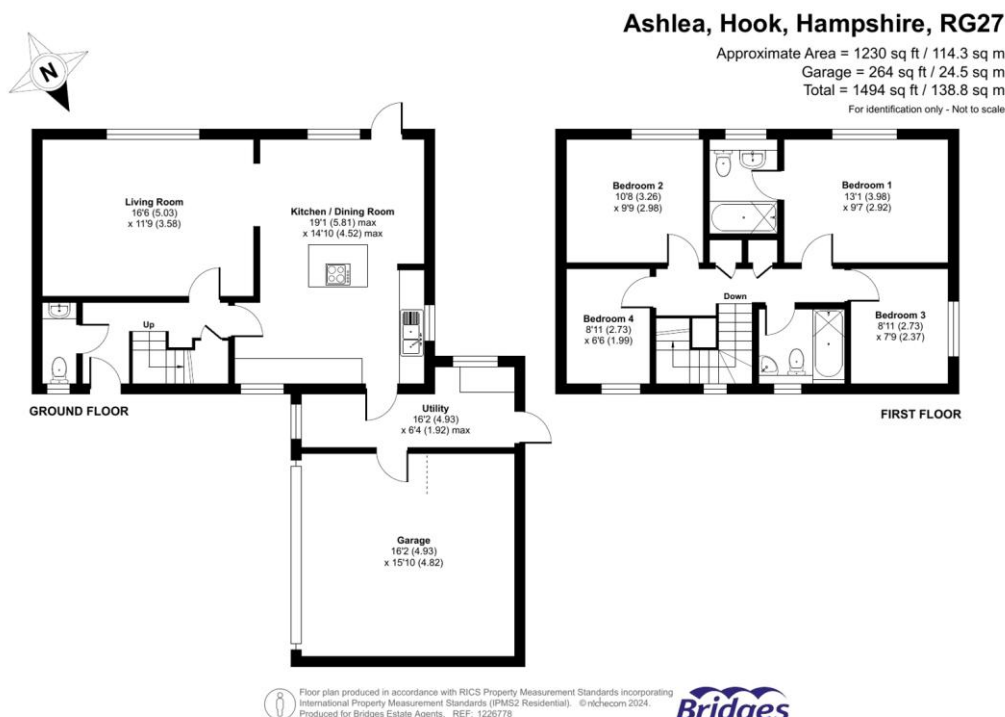
Set on a sought after corner plot, this detached family home offers a well considered layout with modern updates throughout. The ground floor features a replaced Shaker-style kitchen, opening up to the dining room to create a spacious open plan kitchen/diner. At its centre is a stylish island with a gas hob ideal for entertaining. The dining area is complemented by a window and door combination, offering views of and access to the garden. A separate utility room provides access to both the double garage and the rear garden, adding practicality to the home. The living room overlooks the garden, while a welcoming entrance hall includes a cloakroom and under stair storage.

Upstairs, the principal bedroom enjoys a private en suite, while three further bedrooms share a well appointed family bathroom.

Outside

The property boasts a larger than average rear garden that is not overlooked, offering privacy and tranquillity. The outdoor space features a patio and a shaped lawn bordered by mature trees and plants. Ample parking is available with a double garage and driveway. Situated at the end of a peaceful cul-de-sac, the home is within walking distance of the village centre, outstanding schools, and excellent transport links.

Floorplan



TO ARRANGE A VIEWING PLEASE CONTACT:
 Tel: **01256 769999** or Email: **info@bridges.co.uk**



Important Notice - These particulars are set out as a general outline only for the guidance of intended purchasers/tenants and do not form part of any offer or contract and must not be relied upon as statements or representations of fact. Purchasers/Tenants must satisfy themselves by inspection or otherwise as to their correctness.