



## Two Bedroom Maisonette

**Church View, Ash, Surrey, GU12 6RT**

**Price: £300,000**

- Two Double Bedroom Maisonette
- Underfloor Heating
- Gated Driveway Parking
- Private Garden
- Renovated Throughout
- Walking Distance to Ash Rail Station
- Refitted Kitchen
- EPC: C (71)



## Description

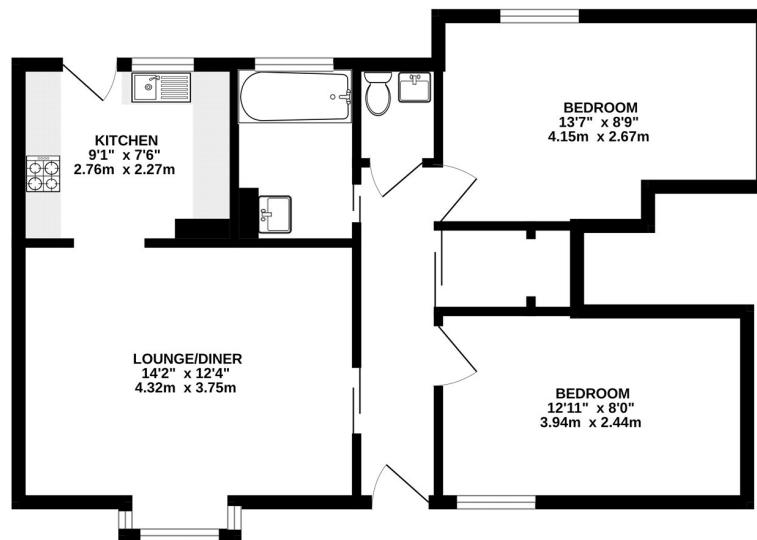
Located within walking distance of Ash rail station and the local amenities is this spacious two bedroom maisonette. The property has undergone complete renovation and is presented in immaculate condition - boasting high spec finishes throughout. The property boasts two good size double bedrooms and a spacious living room. with feature bay windows. You will also find a beautiful refitted kitchen, with a door leading out into the garden - alongside a stunning refitted bathroom suite and a cloakroom. Further benefits include low charges, underfloor heating and double glazing throughout. Give us a call today to book your viewing!

## Outside

Outside boasts its own private garden, as well as gated private parking for a number of vehicles.

## Floorplan

GROUND FLOOR



Whilst every attempt has been made to ensure the accuracy of the floorplan contained here, measurements of doors, windows, rooms and any other items are approximate and no responsibility is taken for any error, omission or mis-statement. This plan is for illustrative purposes only and should be used as such by any prospective purchaser. The services, systems and appliances shown have not been tested and no guarantee as to their operability or efficiency can be given.  
Made with Metropix ©2025



**TO ARRANGE A VIEWING PLEASE CONTACT:**  
Tel: **01252 361550** or Email: **info@bridges.co.uk**



**Important Notice - These particulars are set out as a general outline only for the guidance of intended purchasers/tenants and do not form part of any offer or contract and must not be relied upon as statements or representations of fact. Purchasers/Tenants must satisfy themselves by inspection or otherwise as to their correctness.**