



## Three Bedroom Detached House

**Lynton Close, Farnham, Surrey, GU9 8US**

Price: £500,000

- Three Bedrooms
- Detached
- Overlooking Private Wooded Copse
- No Onward Chain
- Garage
- En Suite Shower
- Conservatory
- EPC: C (69)



## Description

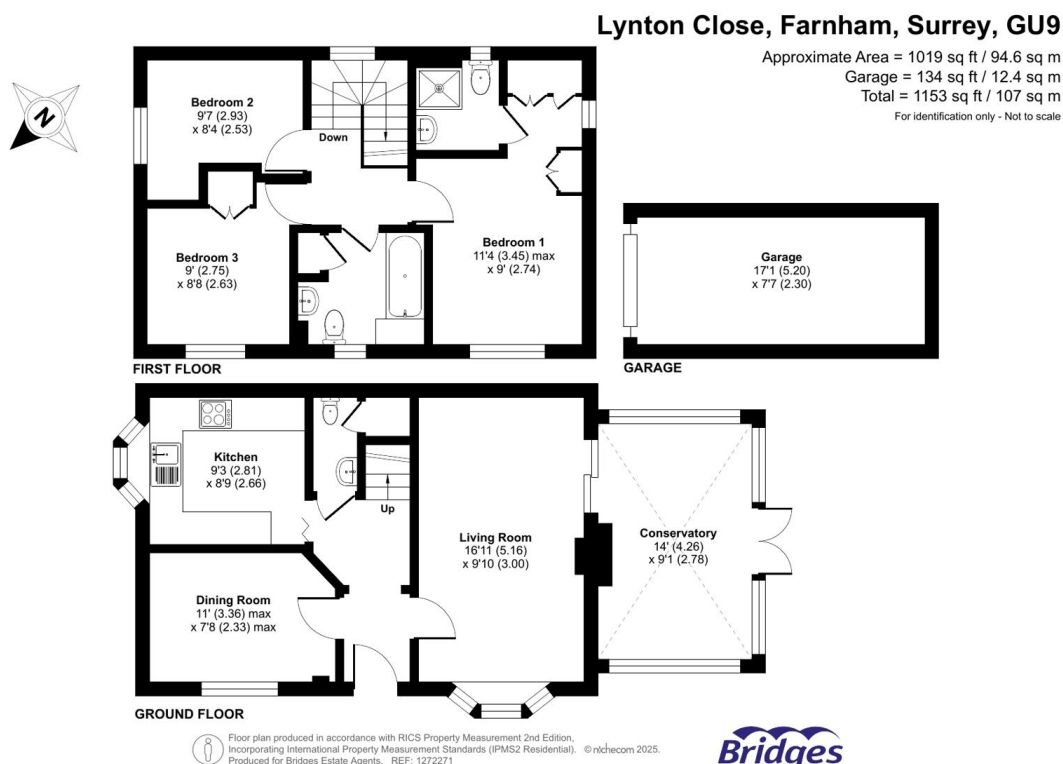
A spacious detached three bedroom family home situated in the highly sought after area of Farnham, just a short walk from Weydon secondary school. The ground floor comprises a sizable lounge area providing access to a conservatory that pleasantly overlooks the garden and benefits from under floor heating. There is a separate dining area boasting plenty of natural light and the kitchen features integrated appliances. Upstairs features three well proportioned bedrooms including the principal bedroom which has the added luxury of its own en suite shower room, along with a family bathroom to make up the first floor.

## Outside

Externally there is driveway parking in front of the garage. The private rear garden is low maintenance, mostly laid with patio, additionally there is a shed for storage. One of the many benefits of this location is the home overlooking a residents private wooded copse.

To view the Material Information Certificate for this property please click [Here](#) or contact us to request a copy.

## Floorplan



**TO ARRANGE A VIEWING PLEASE CONTACT:**  
Tel: **01252 361550** or Email: **info@bridges.co.uk**



Important Notice - These particulars are set out as a general outline only for the guidance of intended purchasers/tenants and do not form part of any offer or contract and must not be relied upon as statements or representations of fact. Purchasers/Tenants must satisfy themselves by inspection or otherwise as to their correctness.