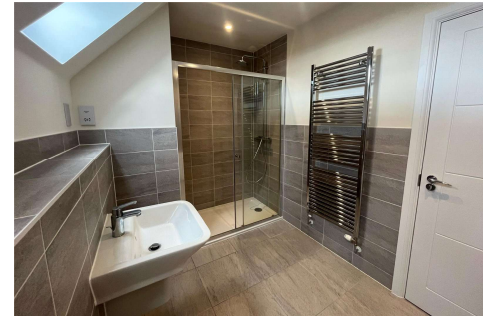
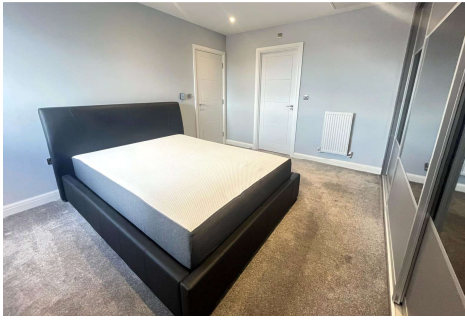


Four Bedroom Semi-Detached House

Hammersley Drive, Ash, Surrey, GU12 6FP

Price: £525,000

- Four Bedrooms
- No Chain
- Garage and Parking
- Solar Panels
- Immaculate Throughout
- New Home Warranty in Place
- En Suite to Bedroom One
- EPC: B (85)



Description

****NO CHAIN**** Located within a popular area in the village of Ash is this stunning three year old, four bedroom semi-detached townhouse. The house is set in an ideal location, being only a short walk from the local secondary school Ash Manor and within walking distance of Ash station and the local amenities. It also offers easy access onto the A3 and M3. The downstairs boasts a newly fitted and fully integral kitchen and a spacious living room - as well as a conservatory with bi-folds that lead out into the garden. You will also find a cloakroom. The first floor benefits from three bedrooms and a family bathroom - whilst the top floor boasts a large main bedroom, with plenty of built in storage and an en suite shower room. Give us a call today to book your viewing!

Outside

Outside benefits from a private garden, parking and side access.

Floorplan



TO ARRANGE A VIEWING PLEASE CONTACT:
Tel: **01252 361550** or Email: **info@bridges.co.uk**



Important Notice - These particulars are set out as a general outline only for the guidance of intended purchasers/tenants and do not form part of any offer or contract and must not be relied upon as statements or representations of fact. Purchasers/Tenants must satisfy themselves by inspection or otherwise as to their correctness.