

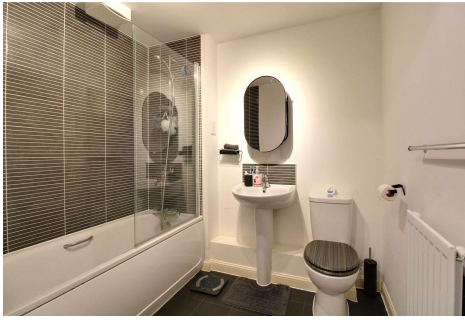


One Bedroom Ground Floor Apartment

Woolhampton Drive, Basingstoke, RG24 9BX

Price: £109,200

- One Double Bedroom
- Spacious Living Area
- Allocated Parking
- Visitor Parking
- Shared Ownership
- 117 Years on Lease
- Three Piece Bathroom
- EPC: B (83)



Description

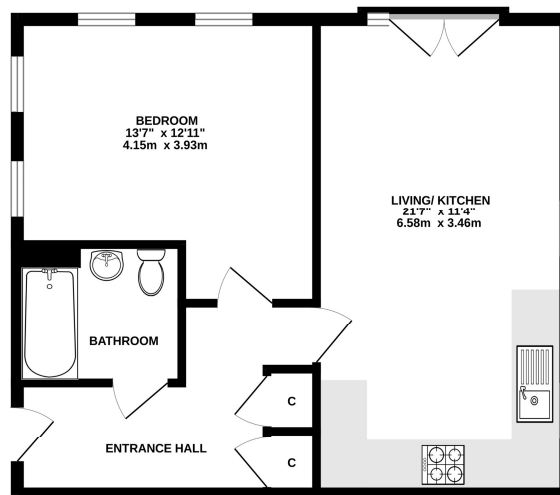
60% SHARED OWNERSHIP This spacious ground floor, one bedroom apartment is available for shared ownership with a 60% share priced at £109,200. The apartment boasts a large hallway with two storage cupboards and a three piece bathroom - as well as a generous dual aspect bedroom, with large windows that flood the room with natural light. The open plan living room and kitchen also feature dual aspect windows and a Juliette balcony, offering a bright and airy space. Perfect for first time buyers looking to take their first step onto the property ladder, this home also benefits from gas central heating and an intercom entry system. Give us a call today to book your viewing!

Outside

Outside there is allocated and visitor parking.

Floorplan

GROUND FLOOR



While every attempt has been made to ensure the accuracy of the floorplan contained here, measurements of doors, windows, rooms and any other items are approximate and no responsibility is taken for any errors, omissions or mis-statements. This plan is for illustrative purposes only and should be used as such by any prospective purchaser. The services, systems and appliances shown have not been tested and no guarantee as to their operability or efficiency can be given.
Made with Interplan 12/02/21



TO ARRANGE A VIEWING PLEASE CONTACT:
Tel: **01256 880001** or Email: **info@bridges.co.uk**



Important Notice - These particulars are set out as a general outline only for the guidance of intended purchasers/tenants and do not form part of any offer or contract and must not be relied upon as statements or representations of fact. Purchasers/Tenants must satisfy themselves by inspection or otherwise as to their correctness.