



Three Bedroom Detached Bungalow

The Grove, Farnborough, Hampshire, GU14 6QS

Price: £525,000

- Four Bedrooms
- Detached
- South Facing Garden
- Two Bathrooms
- Driveway Parking
- No Onward Chain
- Open Plan Kitchen/Dining Room
- EPC: D (57)



Description

Nestled on a quiet and desirable road in The Grove, North Camp, this well presented four bedroom detached chalet bungalow is offered to the market with no onward chain.

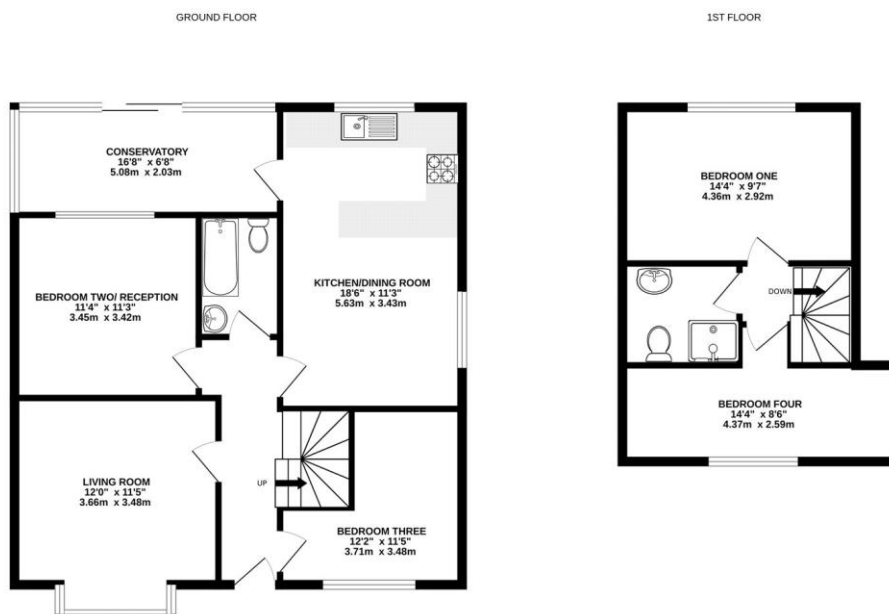
Set over two floors, the property offers a flexible layout with two bedrooms on the ground floor and two further bedrooms on the first floor, ideal for families or those seeking multi generational living.

At the heart of the home is a bright and spacious open plan kitchen and dining area, perfect for everyday living and entertaining. The separate living room features a charming bay window, adding character and providing a lovely space to

Outside

To the front of the property there is driveway parking. To the rear of the property is a south facing mature garden with flower beds around the border and a patio.

Floorplan



Whilst every attempt has been made to ensure the accuracy of the floorplan contained here, measurements of floors, windows, rooms and any other items are approximate and no responsibility is taken for any error, omission or mis-statement. This plan is for illustrative purposes only and should be used as such by any prospective purchaser. The services, systems and appliances shown have not been tested and no guarantee as to their operability or efficiency can be given.
Made with Metropac C02025



TO ARRANGE A VIEWING PLEASE CONTACT:
Tel: **01252 361550** or Email: **info@bridges.co.uk**



Important Notice - These particulars are set out as a general outline only for the guidance of intended purchasers/tenants and do not form part of any offer or contract and must not be relied upon as statements or representations of fact. Purchasers/Tenants must satisfy themselves by inspection or otherwise as to their correctness.